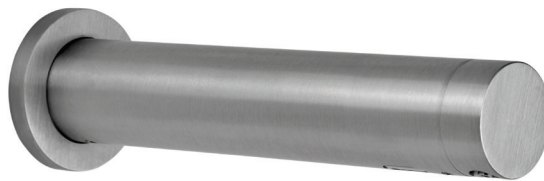


L-460CS Soap Dispenser Stainless Steel

The L-460 is a sensor operated wall mounted soap dispenser, and uses a quick replenishment soap system.



Codes

L-460

Technical Data

Finishes	CS Brushed Satin Finish
Warranty	12 months from date of purchase
Weight	0.86Kg (1lb 14oz)
Recommended soap viscosity	100-3800cPs For liquid soap only. Not for use with foam soap, alcohol gel or hand sanitizer.
Standard discharge	0.8cc adjustable
Body	AISI 316 Stainless Steel
Soap system (included)	1 litre soap bottle and pump (0.26 GAL (US))
Power supply	Mains power (IP68 rated 12V transformer with push-fit cabling to dispenser)

Optional Accessories

L0710005	Remote control settings adjuster – sensitivity
L07100008	Remote control settings adjuster – dosage
L150038	Multi-feed pump; Push fit connector
L150050	Multi-feed soap reservoir for sensor soap dispensers with top fill pipe
L150051	Multi-feed soap reservoir for sensor soap dispenser

L-460CS Soap Dispenser Stainless Steel

Installation Requirements

Wall cut-out (dia)	24mm ($\frac{15}{16}$ ")
Maximum wall thickness	50mm (2")
Fixing height	Sensor on the underside of the soap dispenser to be a minimum 300mm ($11\frac{13}{16}$ ") from any surface.
Access requirements	Pumps and transformers must be accessible at all times for servicing.
Reflective surfaces	Not to be installed above highly polished basins.
Power supply	Must be installed on its own power circuit to avoid interference from other power demands.
Cabling	3 amp fused spur to IP68 rated transformer; low voltage push fit connector to dispenser.
Distance from dispenser to reservoir	Single feed - 1 metre Multi feed - 3 metres

Compliance

cULus
CE

Related Products

Sensor tap [L-180](#)

Related Documents

Installation manual	email: technical@lovair.com
Operation and maintenance manual	email: technical@lovair.com
Warranty document	email: technical@lovair.com

L-460CS Soap Dispenser Stainless Steel

Technical Drawing

