

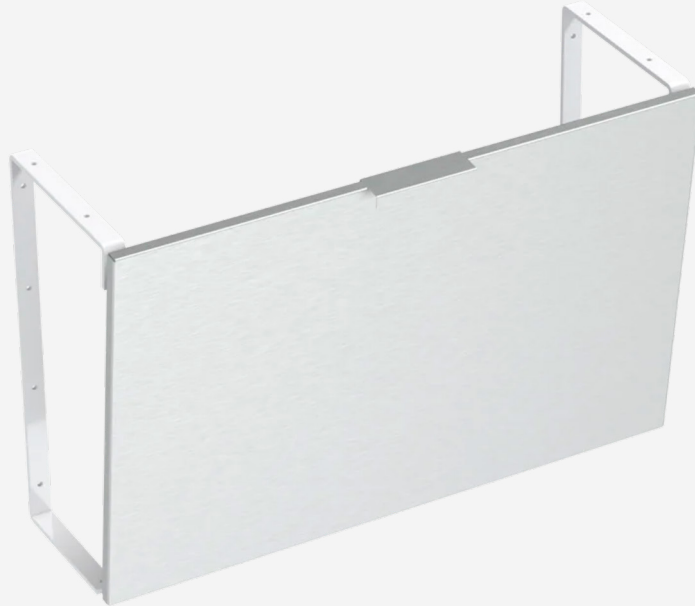
Angled Pipe Skirt

TSL.PS1

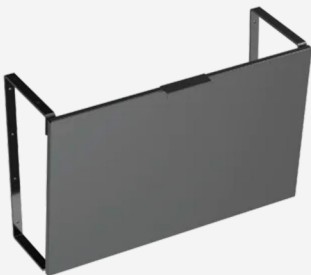
Angled Pipe Skirts work as part of The Monolith Basin System to conceal plumbing and electrical components and create ADA-compliant sink areas. Optional side skirts available.

Finish	Codes
● Matte Black	TSL.PS1.BK
● Gloss White	TSL.PS1.WH
● Brushed Stainless	TSL.PS1.CS

+ Brushed Stainless



+ Matte Black



+ Gloss White



Technical Data

Materials	AISI 304 Brushed Stainless
Closure	Magnet
Finishes	Brushed stainless Gloss white powder coat Matte black powder coat
Weight	9 lbs. (per 30" increment)

Compliance & Certificates

ADA	Compliant with ADA regulations when installed correctly.
-----	--

Installation Requirements

Sink dimensions	Must be mounted with a complementary Monolith sink series.
Wall mounting	Hardware not included. Please use hardware appropriate to the installation type.

Panel Code	Size	Finish	Corresponding Sink	Panels Needed
TSL.PS1.30.CS	30"L x 19.25"H	Brushed Stainless	TSL.MON.A.30	1
TSL.PS1.30.WH	30"L x 19.25"H	Gloss White	TSL.MON.A.30	1
TSL.PS1.30.BK	30"L x 19.25"H	Matte Black	TSL.MON.A.30	1
TSL.PS1.38.CS	38"L x 19.25"H	Brushed Stainless	TSL.MON.A.38	1
TSL.PS1.38.WH	38"L x 19.25"H	Gloss White	TSL.MON.A.38	1
TSL.PS1.38.BK	38"L x 19.25"H	Matte Black	TSL.MON.A.38	1
TSL.PS1.45.CS	45"L x 19.25"H	Brushed Stainless	TSL.MON.A.90	2
TSL.PS1.45.WH	45"L x 19.25"H	Gloss White	TSL.MON.A.90	2
TSL.PS1.45.BK	45"L x 19.25"H	Matte Black	TSL.MON.A.90	2
TSL.PS1.50.CS	50"L x 19.25"H	Brushed Stainless	TSL.MON.A.100	2
TSL.PS1.50.WH	50"L x 19.25"H	Gloss White	TSL.MON.A.100	2
TSL.PS1.50.BK	50"L x 19.25"H	Matte Black	TSL.MON.A.100	2
TSL.PS1.60.CS	60"L x 19.25"H	Brushed Stainless	TSL.MON.A.60, TSL.MON.A.120	1, 2
TSL.PS1.60.WH	60"L x 19.25"H	Gloss White	TSL.MON.A.60, TSL.MON.A.120	1, 2
TSL.PS1.60.BK	60"L x 19.25"H	Matte Black	TSL.MON.A.60 TSL.MON.A.120	1, 2
TSL.PS1.64.CS	64"L x 19.25"H	Brushed Stainless	TSL.MON.A.64	1
TSL.PS1.64.WH	64"L x 19.25"H	Gloss White	TSL.MON.A.64	1
TSL.PS1.64.BK	64"L x 19.25"H	Matte Black	TSL.MON.A.64	1
TSL.PS1.68.CS	68"L x 19.25"H	Brushed Stainless	TSL.MON.A.136	2
TSL.PS1.68.WH	68"L x 19.25"H	Gloss White	TSL.MON.A.136	2
TSL.PS1.68.BK	68"L x 19.25"H	Matte Black	TSL.MON.A.136	2

Additional parts	Finish	Code	No. needed
Side panel - right	Brushed Stainless	TSL.RSS.24.CS	Optional
Side panel - right	Gloss White	TSL.RSS.24.WH	Optional
Side panel - right	Matte Black	TSL.RSS.24.BK	Optional
Side panel - left	Brushed Stainless	TSL.LSS.24.CS	Optional
Side panel - left	Gloss White	TSL.LSS.24.WH	Optional
Side panel - left	Matte Black	TSL.LSS.24.BK	Optional
Wall bracket	Gloss White	PS1.B	2 per panel
Wall bracket	Matte Black	PS1.BK	2 per panel

For specifier use

Panel code	Number of panels		Panel finish
Bracket code	Number of brackets		Bracket finish
Side panel	left	right	none
Signed by	Print name		Date

Included

Door panels

Brackets

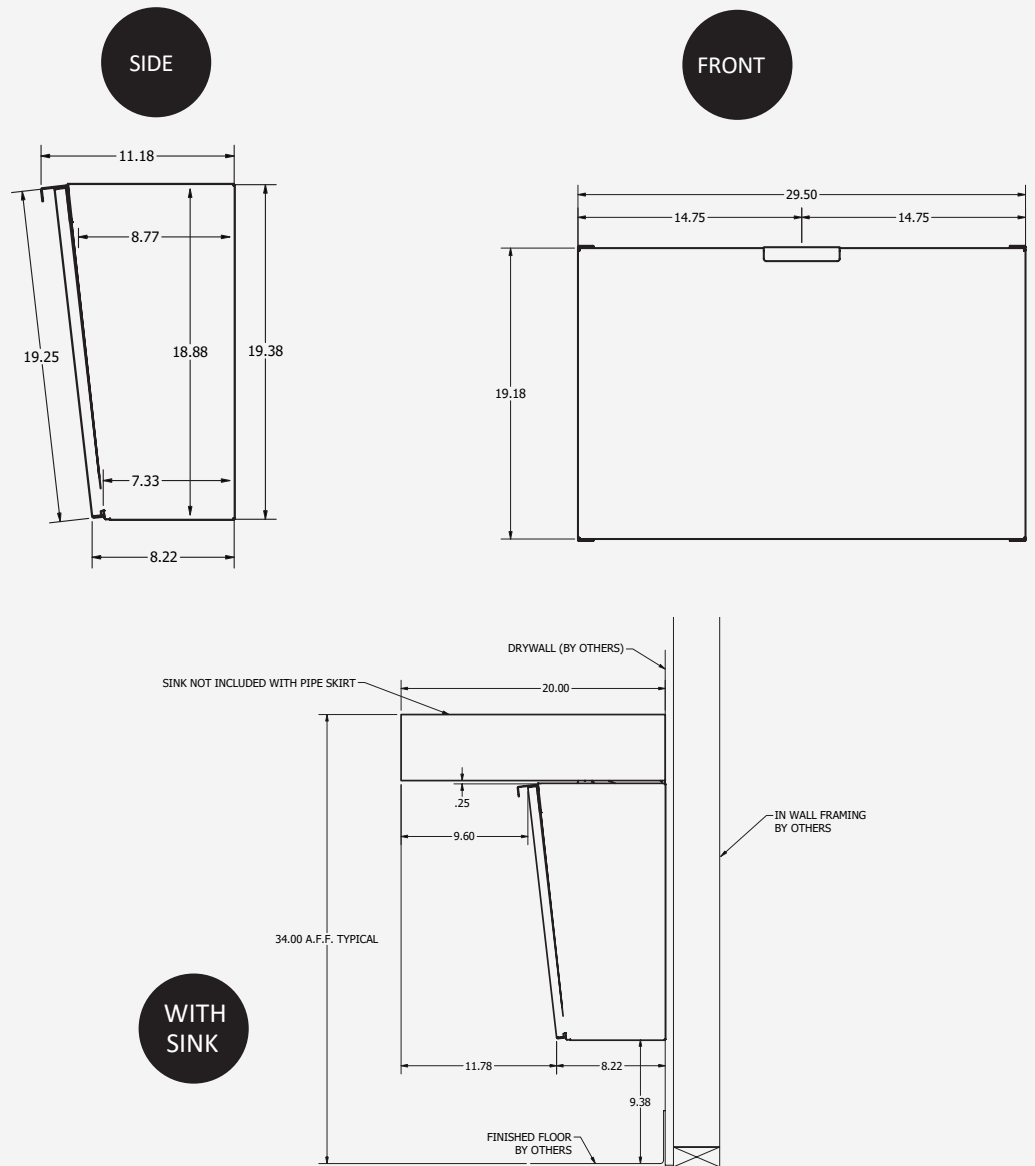
Fixing screws (door)

Not Included

Mounting hardware

Side skirts (optional)

+ Technical Drawing



Warranty & Replacement Parts

TSL backs every fixture with a lifetime guarantee against material defect in the finish.

For warranty terms and conditions please visit www.thesplashlab.com/usa/warranty

For replacement parts, please contact The Splash Lab at info.usa@thesplashlab.com for further information.

Related Products



The Monolith A Series
TSL.MON.A.30



The Monolith A Series
TSL.MON.A.100



Straight Pipe Skirt
TSL.PS2