

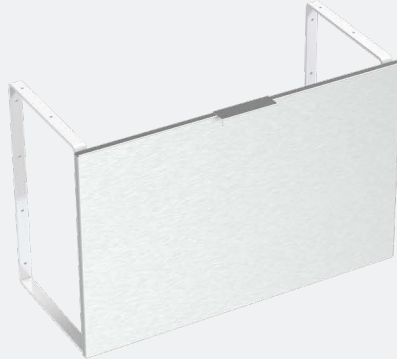
# Straight Pipe Skirt

TSL.PS2

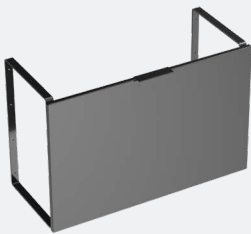
Straight Pipe Skirts work as part of The Monolith Basin System to conceal plumbing and electrical components and create ADA-compliant sink areas. Optional side skirts available.

Finish	Codes
● Matte Black	TSL.PS2.BK
● Gloss White	TSL.PS2.WH
● Stainless Steel	TSL.PS2.CS

**+ Stainless Steel**



**+ Matte black**



**+ Gloss white**



**Technical Data**

Materials	AISI 304 Stainless steel
Closure	Magnet
Finishes	Brushed stainless Gloss white powder coat Matte black powder coat
Weight	9 lbs. (per 30" increment)

**Compliance & certificates**

ADA	Compliant with ADA regulations when installed correctly.
-----	--

**Installation requirements**

Sink dimensions	Must be mounted with a complementary Monolith sink series
Wall mounting	Hardware not included. Please use hardware appropriate to the installation type.

Panel code	Size	Finish	Corresponding Sink	Panels needed
TSL.PS2.30.CS	30"L x 19"H	Stainless Steel	TSL.MON.A.30, TSL.MON.C.30	1
TSL.PS2.30.WH	30"L x 19"H	White	TSL.MON.A.30, TSL.MON.C.30	1
TSL.PS2.30.BK	30"L x 19"H	Black	TSL.MON.A.30, TSL.MON.C.30	1
TSL.PS2.38.CS	38"L x 19"H	Stainless Steel	TSL.MON.B.38	1
TSL.PS2.38.WH	38"L x 19"H	White	TSL.MON.B.38	1
TSL.PS2.38.BK	38"L x 19"H	Black	TSL.MON.B.38	1
TSL.PS2.40.CS	40"L x 19"H	Stainless Steel	TSL.MON.A.120, TSL.MON.C.120, TSL.MON.D.120	3
TSL.PS2.40.WH	40"L x 19"H	White	TSL.MON.A.120, TSL.MON.C.120, TSL.MON.D.120	3
TSL.PS2.40.BK	40"L x 19"H	Black	TSL.MON.A.120, TSL.MON.C.120, TSL.MON.D.120	3
TSL.PS2.42.CS	42"L x 19"H	Stainless Steel	TSL.MON.D.84	2
TSL.PS2.42.WH	42"L x 19"H	White	TSL.MON.D.84	2
TSL.PS2.42.BK	42"L x 19"H	Black	TSL.MON.D.84	2
TSL.PS2.45.CS	45"L x 19"H	Stainless Steel	TSL.MON.A.90, TSL.MON.C.90	2
TSL.PS2.45.WH	45"L x 19"H	White	TSL.MON.A.90, TSL.MON.C.90	2
TSL.PS2.45.BK	45"L x 19"H	Black	TSL.MON.A.90, TSL.MON.C.90	2
TSL.PS2.48.CS	48"L x 19"H	Stainless Steel	TSL.MON.D.48	1
TSL.PS2.48.WH	48"L x 19"H	White	TSL.MON.D.48	1
TSL.PS2.48.BK	48"L x 19"H	Black	TSL.MON.D.48	1
TSL.PS2.50.CS	50"L x 19"H	Stainless Steel	TSL.MON.B.100	2
TSL.PS2.50.WH	50"L x 19"H	White	TSL.MON.B.100	2
TSL.PS2.50.BK	50"L x 19"H	Black	TSL.MON.B.100	2
TSL.PS2.52.CS	52"L x 19"H	Stainless Steel	TSL.MON.D.156	3
TSL.PS2.52.WH	52"L x 19"H	White	TSL.MON.D.156	3
TSL.PS2.52.BK	52"L x 19"H	Black	TSL.MON.D.156	3
TSL.PS2.60.CS	60"L x 19"H	Stainless Steel	TSL.MON.A.60, TSL.MON.C.60	2
TSL.PS2.60.WH	60"L x 19"H	White	TSL.MON.A.60, TSL.MON.C.60	2
TSL.PS2.60.BK	60"L x 19"H	Black	TSL.MON.A.60, TSL.MON.C.60	2
TSL.PS2.64.CS	64"L x 19"H	Stainless Steel	TSL.MON.B.64	1

Panel code	Size	Finish	Corresponding Sink	Panels needed
TSL.PS2.64.WH	64"L x 19"H	White	TSL.MON.B.64	1
TSL.PS2.64.BK	64"L x 19"H	Black	TSL.MON.B.64	1
TSL.PS2.68.CS	68"L x 19"H	Stainless Steel	TSL.MON.B.136	2
TSL.PS2.68.WH	68"L x 19"H	White	TSL.MON.B.136	2
TSL.PS2.68.BK	68"L x 19"H	Black	TSL.MON.B.136	2

Additional parts	Finish	Code	No. needed
Side panel - right	Stainless steel	TSL.RSS2.CS	Optional
Side panel - right	White	TSL.RSS2.WH	Optional
Side panel - right	Black	TSL.RSS2.BK	Optional
Side panel - left	Stainless steel	TSL.LSS2.CS	Optional
Side panel - left	White	TSL.LSS2.WH	Optional
Side panel - left	Black	TSL.LSS2.BK	Optional
Wall bracket	White	PS2.B	2 per panel
Wall bracket	Black	PS2.BK	2 per panel

continued on following page

**For specifier use**

Panel code	Number of panels		Panel finish
Bracket code	Number of brackets		Bracket finish
Side panel	left	right	none
Signed by	Print name		Date

### Included

Door panels

Brackets

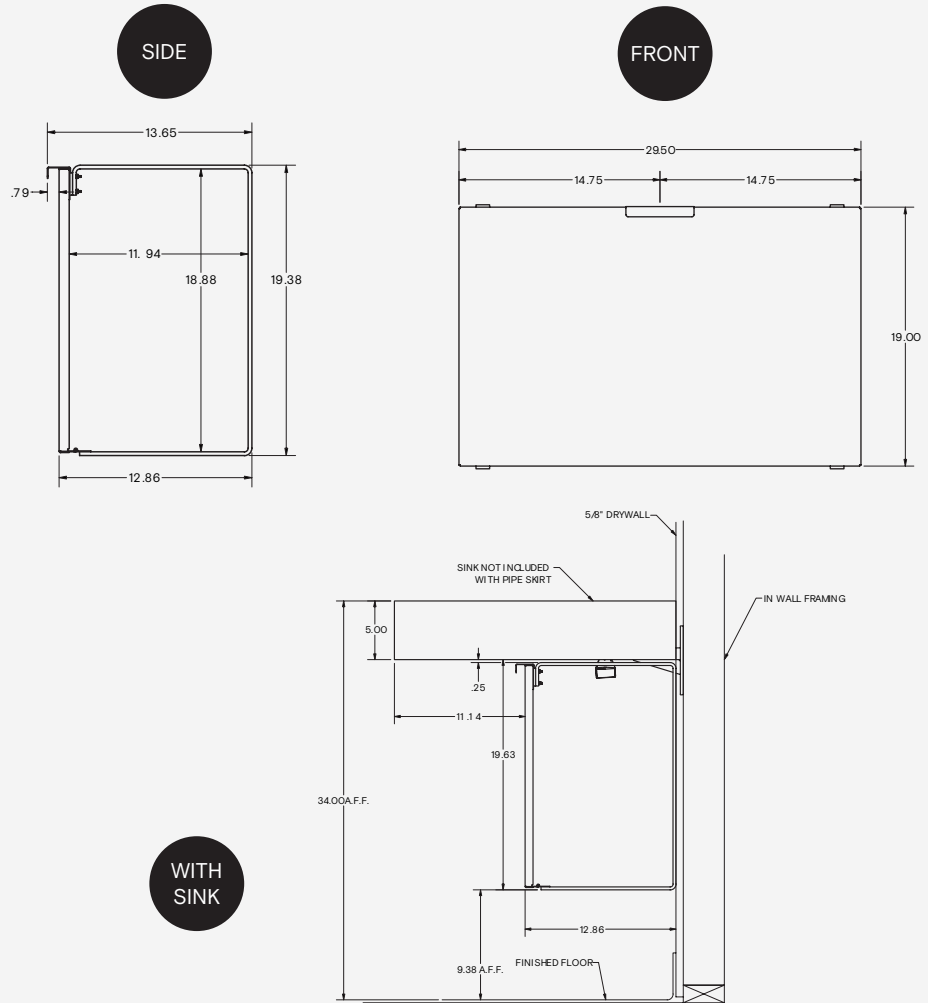
Fixing screws (door)

### Not included

Mounting hardware

Side skirts (optional)

### + Technical drawing



### Warrenty

1 year limited warranty

Unlimited digital support

### Spare parts

If a situation arises where replacement components are required outside of a maintenance contract, there may be provision to obtain spare parts. Providing the components are under warranty and the parts have become non-functioning during normal use within their assumed usable life, they may be replaced. Should a replacement mains power supply be required it is imperative that an identical type is used. Contact **The Splash Lab** for further information.

### Part

### Codes

There are no user serviceable parts.

### Related products



**Under Basin Waste Unit**  
LR16



**The Monolith C Series**  
TSL.MON.C