

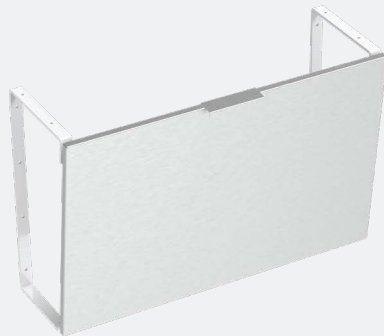
Angled Pipe Skirt

TSL.PS1

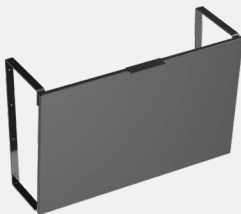
Angled Pipe Skirts work as part of The Monolith Basin System to conceal plumbing and electrical components and create ADA-compliant sink areas. Optional side skirts available.

Finish	Codes
● Matte Black	TSL.PS1.BK
● Gloss White	TSL.PS1.WH
● Stainless Steel	TSL.PS1.CS

+ Stainless Steel



+ Matte black



+ Gloss white



Technical Data

Materials	AISI 304 Stainless steel
Closure	Magnet
Finishes	Brushed stainless Gloss white powder coat Matte black powder coat
Weight	9 lbs. (per 30" increment)

Compliance & certificates

ADA	Compliant with ADA regulations when installed correctly.
-----	--

Installation requirements

Sink dimensions	Must be mounted with a complementary Monolith sink series
Wall mounting	Hardware not included. Please use hardware appropriate to the installation type.

Panel code	Size	Finish	Corresponding Sink	Panels needed
TSL.PS1.30.CS	30"L x 19.25"H	Stainless Steel	TSL.MON.A.30	1
TSL.PS1.30.WH	30"L x 19.25"H	White	TSL.MON.A.30	1
TSL.PS1.30.BK	30"L x 19.25"H	Black	TSL.MON.A.30	1
TSL.PS1.38.CS	38"L x 19.25"H	Stainless Steel	TSL.MON.B.38	1
TSL.PS1.38.WH	38"L x 19.25"H	White	TSL.MON.B.38	1
TSL.PS1.38.BK	38"L x 19.25"H	Black	TSL.MON.B.38	1
TSL.PS1.45.CS	45"L x 19.25"H	Stainless Steel	TSL.MON.A.90	2
TSL.PS1.45.WH	45"L x 19.25"H	White	TSL.MON.A.90	2
TSL.PS1.45.BK	45"L x 19.25"H	Black	TSL.MON.A.90	2
TSL.PS1.50.CS	50"L x 19.25"H	Stainless Steel	TSL.MON.B.100	2
TSL.PS1.50.WH	50"L x 19.25"H	White	TSL.MON.B.100	2
TSL.PS1.50.BK	50"L x 19.25"H	Black	TSL.MON.B.100	2
TSL.PS1.60.CS	60"L x 19.25"H	Stainless Steel	TSL.MON.A.60, TSL.MON.A.120	1, 2
TSL.PS1.60.WH	60"L x 19.25"H	White	TSL.MON.A.60, TSL.MON.A.120	1, 2
TSL.PS1.60.BK	60"L x 19.25"H	Black	TSL.MON.A.60, TSL.MON.A.120	1, 2
TSL.PS1.64.CS	64"L x 19.25"H	Stainless Steel	TSL.MON.B.64	1
TSL.PS1.64.WH	64"L x 19.25"H	White	TSL.MON.B.64	1
TSL.PS1.64.BK	64"L x 19.25"H	Black	TSL.MON.B.64	1
TSL.PS1.68.CS	68"L x 19.25"H	Stainless Steel	TSL.MON.B.136	2
TSL.PS1.68.WH	68"L x 19.25"H	White	TSL.MON.B.136	2
TSL.PS1.68.BK	68"L x 19.25"H	Black	TSL.MON.B.136	2

Additional parts	Finish	Code	No. needed
Side panel - right	Stainless steel	TSL.RSS.24.CS	Optional
Side panel - right	White	TSL.RSS.24.WH	Optional
Side panel - right	Black	TSL.RSS.24.BK	Optional
Side panel - left	Stainless steel	TSL.LSS.24.CS	Optional
Side panel - left	White	TSL.LSS.24.WH	Optional
Side panel - left	Black	TSL.LSS.24.BK	Optional
Wall bracket	White	PS1.B	2 per panel
Wall bracket	Black	PS1.BK	2 per panel

continued on following page

For specifier use

Panel code	Number of panels		Panel finish
Bracket code	Number of brackets		Bracket finish
Side panel	left	right none	Side panel finish
Signed by	Print name		Date

Included

Door panels

Brackets

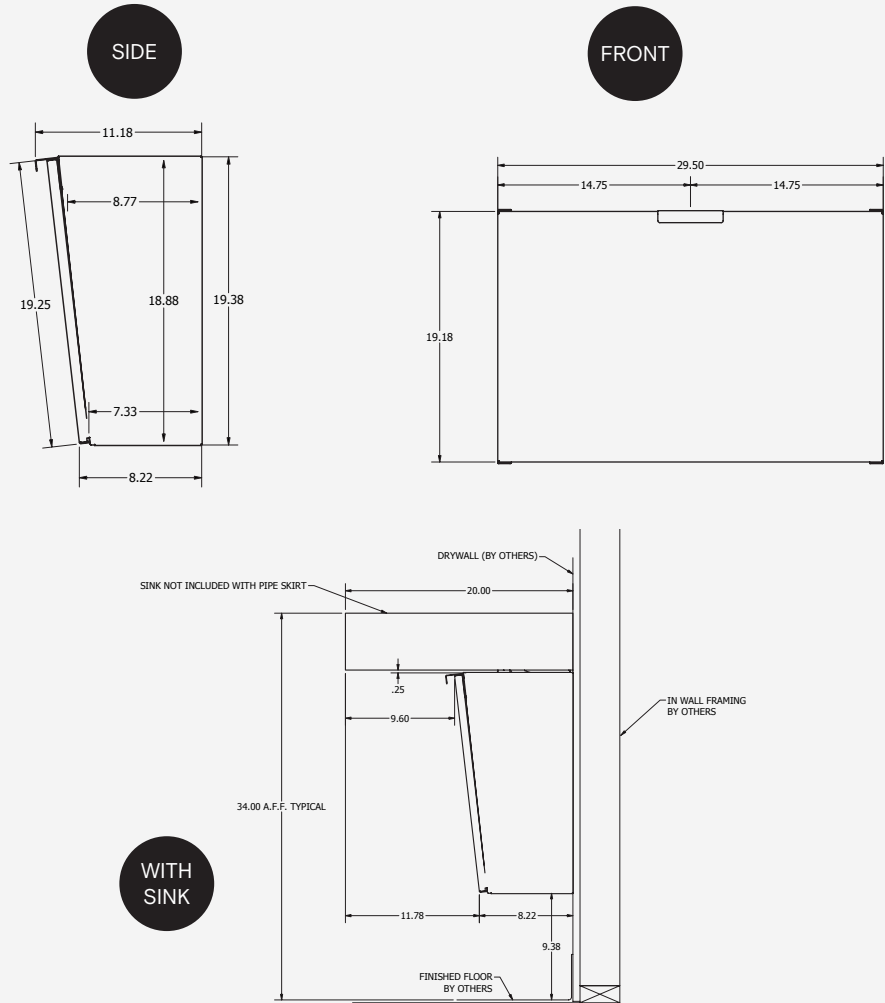
Fixing screws (door)

Not included

Mounting hardware

Side skirts (optional)

+ Technical drawing



Warrenty

1 year limited warranty

Unlimited digital support

Spare parts

If a situation arises where replacement components are required outside of a maintenance contract, there may be provision to obtain spare parts. Providing the components are under warranty and the parts have become non-functioning during normal use within their assumed usable life, they may be replaced. Should a replacement mains power supply be required it is imperative that an identical type is used. Contact **The Splash Lab** for further information.

Part

Codes

There are no user serviceable parts.

Related products



Under Basin Waste Unit
LR16



The Monolith A Series
TSL.MON.A