

# Recessed Flush Pull

TSL.H60

A minimalistic flush pull in high grade stainless steel and an easily sanitised satin finish. The oblong recess is inset for a built-in look. Also available in four PVD coloured finishes.

Finish	Codes	LRV*
● Satin	TSL.H60.CS	58
● Black	TSL.H60.BK	3
● Brass	TSL.H60.BR	40
● Copper	TSL.H60.CP	19
● Bronze	TSL.H60.BZ	17

**+ Satin**



**+ Black**



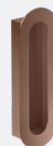
**+ Brass**



**+ Copper**



**+ Bronze**



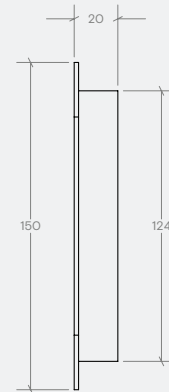
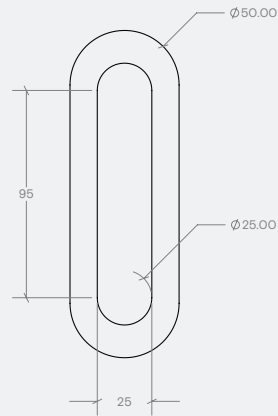
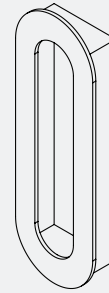
## Recessed Flush Pull

2x No.6 wood screws

Material	Stainless steel
Steel grade	AISI316


1 year limited warranty

A diagram showing a rectangular block resting on a horizontal surface. A horizontal arrow points to the right, originating from the right side of the block, representing an applied force.



If additional spare parts are required and are not listed below, please contact us at [info.uk@thesplashlab.com](mailto:info.uk@thesplashlab.com)

The Splash Lab is not responsible for improper installation or misuse.



REV 2025 27-May