

Wall Mounted Doorstop

TSL.H32

A minimalistic, wall-mounted doorstop in a brushed satin finish. A durable soft rubber tip protects the door and doorstop body. Made from high grade stainless steel. Also available in four PVD colourised finishes.

Finish	Codes	LRV*
● Satin	TSL.H32.CS	58
● Black	TSL.H32.BK	3
● Brass	TSL.H32.BR	40
● Copper	TSL.H32.CP	19
● Bronze	TSL.H32.BZ	17



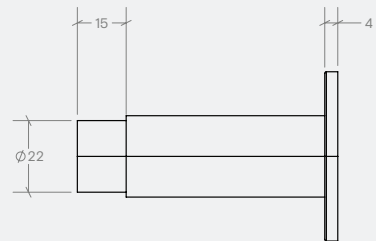
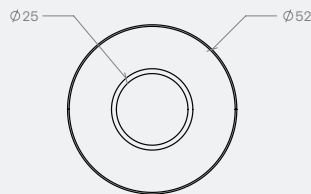
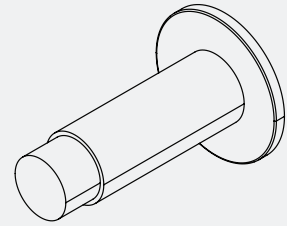
Wall Mounted Doorstop

4x No.8 wood screws

Material	Stainless steel
	Rubber
Steel grade	AISI316

1 year limited warranty

Diagram of a T-shaped cross-section. The total height is 80 units. The top flange is 10 units thick. The stem is 10 units wide and 60 units high. The bottom flange is 10 units thick and 10 units wide.



For warranty terms and conditions please visit **www.thesplashlab.com**
If additional spare parts are required and are not listed below, please contact us at **info.uk@thesplashlab.com**

Must be mounted to an appropriate hard surface
The Splash Lab is not responsible for improper installation or misuse.

The image shows two views of a door handle. The left view is a side profile of a cylindrical handle with a horizontal grip. The right view is a top-down perspective of the same handle, showing a circular base with a small red indicator light and a horizontal slot for a key or tool.

Double Toilet Roll Holder
TSL46