

L-980 Series



Electronic Sensor Tap

L-981

L-982

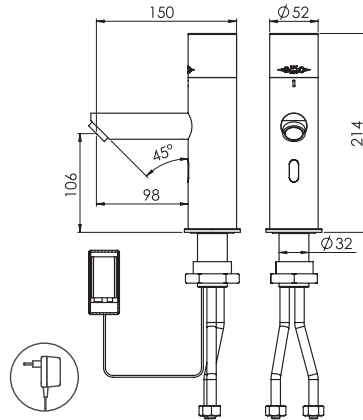
L-983

L-984

Index

03	Technical Data
04	Pack Contents
05	Pre - Installation Information
06-07	Tap Installation
08	Setting Adjustment
11	Battery Replacement
12	Maintenance
13	Troubleshooting
14	Spare Parts List
15	Warranty

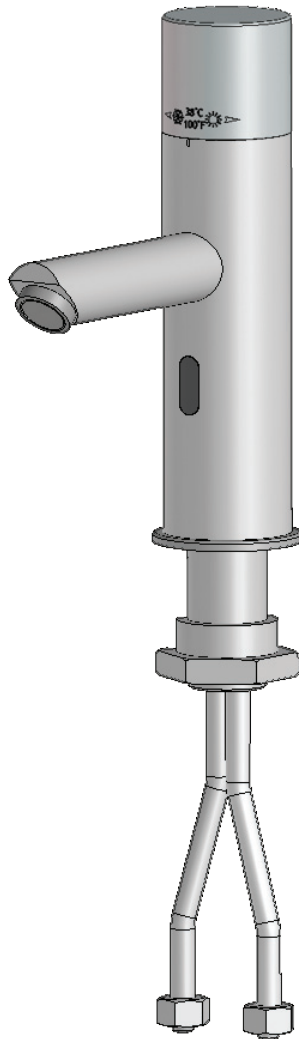
Technical Data



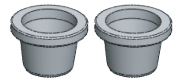
Power supply for L-980:	Internal 1x9V battery
Power supply for L-980:	9V transformer
Min Operating Water Pressure:	1 bar (14.5 PSI)
Max Operating Water Pressure:	5.0 bar (72.5 PSI) With water pressure of more than 5 bars, use a pressure reducing valve.
Sensor range: 170 mm.	Adjustable with remote control.
Minimum sensor range:	50 mm
Maximum sensor range:	350 mm
Security time:	90 seconds. Can be reduced with the remote control.
Hot water temperature:	Max 70 °C

Pack Contents

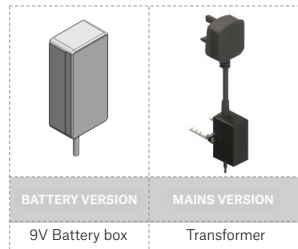
Familiarize yourself with the part names and confirm that the parts are included.



1x Allen key



2 x Filters



1x Tap and attachments

Pre - Installation Information

Check contents

Separate all parts from the packaging and check each part with the pack contents section.

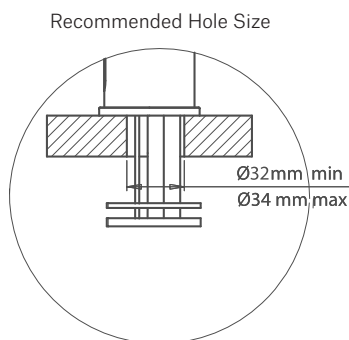
Pay attention to the different models variations.

Make sure all parts are accounted for before discarding any packaging material.

If any parts are missing, do not attempt to install your electronic tap until you obtain the missing parts.

Warning

- 1) To avoid reflection problems keep a distance of more than 300 mm between the sink and the spout.



Preparation for installation

Flush water supply pipes thoroughly before installing the tap.

Do not allow dirt, Teflon tape or metal particles to enter the tap.

Shut off water supply.

Important

All plumbing is to be installed in accordance with applicable codes and regulations.

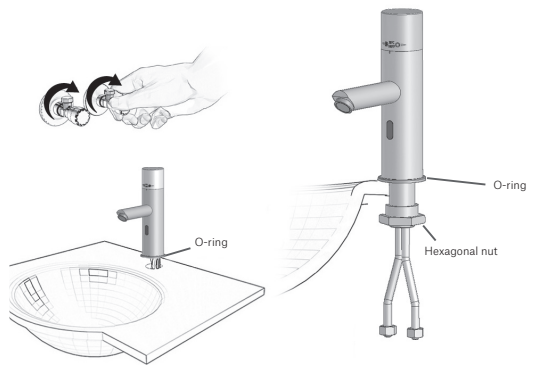
Tap Installation

Step 1 – Preparation for mounting the tap

Shut off water supply and remove the hexagonal nut, the washer and the gasket. Do not remove the O-ring from the base of the tap.

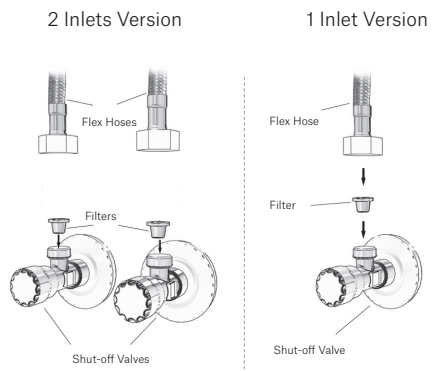
Step 2 – Installing the tap

1. Place the tap with O-ring into the hole in deck or basin. Make sure the O-ring is located between the deck or basin and the bottom of the tap.
2. Secure the tap to deck or basin with the hexagonal nut.



Step 3 – Connecting the water supply

1. a) Place the filters to the pipe inlet water supply
b) Connect the flexible pipe to the water supply
c) For models with temperature control connect the red flexible pipe to the hot water supply and the blue flexible pipe to the cold water supply.
2. Turn on the central water supply and the shut-off valves.
3. Check for leaks.

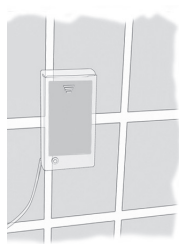


Tap Installation

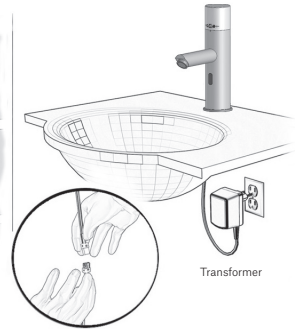
Step 4 - Connecting the power source

1. Connect the power source:
 - a. For battery versions: install the battery's box at the wall underneath the sink using the two sided adhesive foam tap. The cable connection must point down. (You can use an optional extension cable in order to assemble the battery box up to 10ft away from the sink. See section "Spare parts".)
 - b. For transformer versions: Plug the transformer into the electricity socket and connect the connectors.

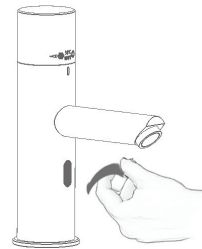
Battery Version



Transformer Version



2. If the range is unsatisfactory, refer to the section titled "Setting adjustment".
3. Now remove the protecting sticker that covers the sensor and wait 10 seconds before activating the tap.
Step 5 - Setting thermostatic mixing Cap L-180 includes a thermostatic mixer located in the tap cap. The mixer has been factory set for balanced pressures and water supply of 38°C. Rotate the cap to the right to obtain cold water and to the left to obtain hot water. To set the temperatures according to the operating conditions of your installation environment: To release the thermostatic mixing cap: Unscrew the M4X6 screw located behind the thermostatic cap using the 2mm Allen Key.
4. Note: L-980 includes a special aerator that allows you to adjust the water stream direction on site in order to prevent water splashing if needed. To change the angle of the water stream, simply move the adjustable tilting plate by pressing it smoothly.



Settings Adjustment

Adjusting the settings with the remote control

If necessary, the sensor settings can be adjusted as following:

Shut off the water supply. In order to adjust the sensor with the remote control, hold the remote control straight in front of the sensor in a distance of about 6-8" (15-20cm). Choose the function you want to adjust by pressing once on one of the function buttons. After pressing once on a specific function button, a quick flashing of the red light at the front of the sensor will occur. At this stage, you can change the setting by pressing the (+) or the (-) buttons, every push will increase or decrease one level. After finishing the adjustment, turn the water supply back on.



Settings Adjustment



DETECTION RANGE: This tap was supplied with a Self Adjusting Sensor. The ideal detection range for the specific location will be set automatically.

Only if necessary, use the remote control to adjust the sensor range as follows:

Press the RANGE button. Wait until a quick flashing of the red light of the sensor eye is perceived. Then, press + to increase the one level and - to reduce it every push will increase or decrease one level.

Note: Once you have changed the detection range with the remote control, this distance will be remembered by the sensor, even if the power source is disconnected. To get back to the self adjustment mode, use the ADJ button only.



Entrance to the self adjustment mode: Check that no objects are in front of the sensor. Press the ADJ button. Once a quick flashing of the red light of the sensor eye is perceived, remove your hand holding the remote control and move away from the sensor area. The ideal sensor range for the specific location will be set automatically. Once the self adjustment has taken place the solenoid valve will be opened and closed for 1 second as an indication that the ideal sensor range was set and the product is ready for use.



Security time: The Security time, prevents continuous running of water due to reflections or vandalism. By default, if the sensor is covered for more than 90 seconds the water flow will shut automatically. To resume regular operation any obstruction must be removed.

Press the SEC button. Wait until a quick flashing of the red light of the sensor eye is perceived. Then, press + to increase the security time and - to reduce it.



Delay in time: It is recommended to change the delay in time for flush valves for urinals or toilets only.

If required, the delay in time can also be modified in taps as follows:

Press the IN button. Wait until a quick flashing of the red light of the sensor eye is perceived. Then, press + to increase the delay in time and - to reduce it.

Settings Adjustment



Delay out time: This button allows modifying the water flow time after the user removes his hands from the tap. A delay out time close to 0 will save more water. An increased delay out time will make the user experience more comfortable.

If required, the delay out time can be modified as follows:

Press the OUT button. Wait until a quick flashing of the red light of the sensor eye is perceived. Then, press + to increase the delay out time and - to reduce it.



Temporary Off function: This function is ideal to perform any kind of activity in front of the sensor without operating the system (for example, cleaning).

The tap will remain shut for 1 minute when this button is pressed once. To cancel this function and to return to normal operation press the On/Off button again or wait 1 minute.



Reset button: This function restores all the factory settings except for the sensor range. If required, press the Reset button and without releasing it, press the + button once.

Note: To enter the self adjusting mode, use the ADJ button. To change the sensor range, use the RANGE button.

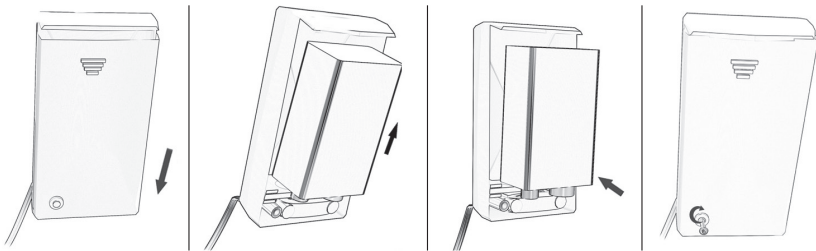
Battery Replacement

Battery models only

The user is to activate the tap by placing their hands within the range of the infra-red sensor, to cause the solenoid valve to open for a preset time. The valve will close a set time after the user's hands have been removed from the detection range.

To replace the battery at battery models:

1. Close the water supply
2. To reach access to the battery, unscrew the set screw located at the underside part of the L-980 body using the 2mm Allen key provided.
3. Disassemble the sensor cap.
4. Remove the old battery, disconnect from the battery connector and take out the battery cover protection.
5. Replace the used battery with a new 9V battery. A Lithium battery is recommended.
6. Carefully place the battery inside the body and reassemble the electronic unit connector to the battery.



Important:

Since water contacting the battery terminals rapidly drains the battery, do not allow moisture or water into the system while the battery is being replaced.

Make sure the O-ring is still in its groove and is not damaged. If needed replace it with a new one if needed or clean and lubricate it with silicon grease before reassembling the parts.

Spent batteries should not be disposed of with normal household waste. Contact your local authority for information on waste disposal and recycling.

Maintenance

Maintenance

This tap is provided with two stainless steel filters preventing foreign particles to enter the lines. If the water flow has decreased, this may be because the filter is clogged. The filters can be cleaned as follows:

1. Shut-off the water and shut-off the valve.
2. Disconnect the flexible pipe
3. Remove the filters and wash them under running water
4. Reassemble the parts
5. Reconnect the flexible pipe and restore the incoming water supply
6. Make sure that there is no water leakage.

Care and cleaning of chrome and special finishes

DO NOT use steel wool or cleansing agents containing alcohol, acid, abrasives, or the like. Use of any prohibited cleaning or maintenance products or substances could damage the surface of the tap. For surface cleaning of tap use **ONLY** soap and water, then wipe dry with clean cloth or towel. When cleaning bathroom tile, the taps should be protected from any splattering of harsh cleansers.

Trouble Shooting

Problem	Indicator	Cause	Solution
Water not flowing	Sensor flashes continuously when user's hands are within sensor range.	Low battery	Replace battery
	Red light in the sensor does not flash when user's hands are within sensor range.	Range is too short	Increase range
		Range is too long	Decrease range
		Battery is completely out of power	Replace batteries
		Tap is in 'Security Mode' (see note below)	
		Sensor is detecting reflection from basin or other source	Remove obstruction
	Red light in the sensor flashes once when user's hands are within range.	Connection between the sensor and the solenoid is disconnected.	Connect the sensor to the solenoid
		Debris or limescale in solenoid valve.	Remove solenoid valve, pull out the plunger and spring and clean the parts under running water. If necessary, use a proprietary limescale remover. When replacing the plunger, ensure the spring is in the correct orientation.
		The central orifice in the diaphragm is blocked or the diaphragm is damaged.	Clean orifice or replace diaphragm (Lovair part no L04500001)
		The water supply pressure is more than 8bar.	Reduce water supply pressure.
The water supply pressure is under 8 bar and yet the pressure in the tap's body is higher. This situation could be caused by a sudden increase in the water supply pressure that the backcheck prevents from dropping, even after water supply pressure drops under 8 bars.		Shut off water supply and unscrew one of the flexible pipes in order to reduce the pressure that blocks the supply to the tap.	
Water flow does not stop from spout.	Sensor flashes once when user's hands are within range	Debris or limescale in diaphragm.	Clean orifice or diaphragm (see instructions below)
	Red light in sensor does not flash once user's hands are within sensor detection range	Sensor is dirty or covered	Clean sensor or remove obstruction.
		Sensor is picking up reflections from the basin or other object	Decrease sensor detection range, and / or remove cause of reflection.
Water flow diminished		In-line filter / strainer is blocked	Remove, clean and replace the filter.
Water flow is intermittent		Sensor is picking up reflections from the basin or other object	Decrease sensor detection range, and / or remove cause of reflection.

Spare Parts List

Spare Parts

L7000002	Solenoid valve
L07221009	Solenoid valve with valve housing
L04500001	Solenoid valve diaphragm
L09550036	Sensor tap flexi hose - $\frac{1}{2}$ " BSP thread - 450mm
L09510073	Sensor tap flexi hose - $\frac{1}{2}$ " BSP thread - 700mm
L06530021	IP67 rated transformer - 9V
L06530020	IP67 rated battery box (for 6x AA batteries)
L06522102	IP68 rated transformer - 9V
L08510040	Cascade aerator - 3.98 litres per minute (1 US gal per min)
L08510012	Cascade aerator - 1.89 litres per minute (0.5 US gal per min)
L08510034	Cascade aerator - 6 litres per minute (1.59 US gal per min)

If further information is required, contact Lovair technical team for more detailed guidelines.

Limited Warranty

Warranty

The Splash Lab Ltd. warrants that its electronic taps, flush valves and controls will be free of defects in material and workmanship during normal use for two years from the date the product is purchased.

If a defect is found in normal use, The Splash Lab Ltd. will, at its discretion, repair, provide a replacement part or product, or make appropriate adjustments. Damage caused by accident, misuse, or abuse is not covered by this warranty. Improper care and cleaning will void the warranty. Proof of purchase (original sales receipt) must be provided to The Splash Lab Ltd. with all warranty claims.

The Splash Lab Ltd is not responsible for labour charges, installation, or other incidental or consequential costs other than those noted above. In no event shall the liability of The Splash Lab Ltd. exceed the purchase price of the tap, valve or control.

If you believe that you have a warranty claim, contact your The Splash Lab Distributor, Dealer or Plumbing Contractor. Please be sure to provide all pertinent information regarding your claim, including a complete description of the problem, the product, model number, the date the product was purchased, from whom the product was purchased and the installation date. Also include your original invoice.

THE SPLASH LAB LTD AND/OR SELLER DISCLAIM ANY LIABILITY FOR SPECIAL, INCIDENTAL OR CONSEQUENTIAL DAMAGES. This warranty excludes product damage due to installation error, incorrect maintenance, wear and tear, battery, water composition, product abuse, or product misuse, whether performed by a contractor, service company, or the consumer. This warranty does not cover product damage caused by the following:

- Incorrect installation, inversions of supply pipes.
- Pressures or temperatures exceeding recommended limits.
- Improper manipulation, tampering, bad or lapsed maintenance.
- Foreign bodies, dirt or scale introduced by the water supply.

+ **THE SPLASH LAB**
