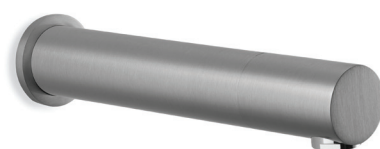


L-180

Sensor
Tap

The L-180 Series wall mounted sensor tap is extremely functional and robust and suits any washroom due to the minimalist design and choice of spout size.



| CODES | POWER SUPPLY | LENGTH | WEIGHT |
|-------|--------------|------------------------------|---------------------|
| L-182 | Mains | 170mm (6 $\frac{11}{16}$ ") | 1.16Kg (2lb 9oz) 1. |
| L-184 | Mains | 220mm (8 $\frac{21}{32}$ ") | 1.27Kg (2lb 13oz) |

TECHNICAL DATA

| | |
|-----------------------------|--|
| Finishes | C (Chrome) / CS (Satin) |
| Min/Max operations pressure | 0.5 - 8 bar dynamic pressure (7.2 - 116 psi) |
| Flow rate | 4 litres per minute (1 GPM (US)) standard. Options for 1.89 and 6 litres per minutes (0.5 and 1.59 GPM (US)) available |
| Aerator | Cascade |
| Warranty | 2 years from date of purchase. |
| Sensor range (adjustable) | Preset 120mm (4 $\frac{23}{32}$ "). Min range 50mm (2") - Max range 200mm (7 $\frac{7}{8}$ ") |
| Security cut-off | 90 seconds |
| Hot water temperature | Max 70°C (158°F) |
| Power supply | Mains - IP67 rated transformer with push-fit cabling to tap Battery - IP67 rated battery holder with push-fit cabling to tap (6 x AA batteries) |

TSL + HERITAGE

OPTIONAL ACCESSORIES

| | |
|-----------|---|
| L06001012 | Power splitter 2 Way - 1M-2F -1.5 metre (59") |
| L06001008 | Power splitter 3 Way - 1M-3F - 1.5 metre (59") |
| L06009016 | Extension cable 1 metre (39 $\frac{1}{2}$ ") |
| L06009032 | Extension cable 4 metre (157 $\frac{1}{2}$ ") |
| L09510073 | 700mm flexi hose - $\frac{1}{2}$ " BSP thread |
| L0710005 | Remote control for sensor tap |
| L08510012 | Aerator - 1.89 litres per minute (0.5 GPM (US)) |
| L08510034 | Aerator - 6 litres per minute (1.59 GPM (US)) |
| L130001 | Aerator - Spray - 1.3 litres per minute (0.35 GPM (US)) |
| L260025 | 6V battery pack |

INSTALLATION REQUIREMENTS

| | |
|------------------------------|--|
| Wall cutout | 23mm ($\frac{29}{32}$ ") - 27mm (1 $\frac{1}{16}$ ") plus 3.5mm ($\frac{9}{64}$ ") anti-rotation pin locating hole |
| Maximum wall thickness | 33mm (1 $\frac{19}{64}$ ") |
| Electrical supply | 3amp fused spur to be connected to IP68 transformer supplied; low voltage push fit connector to tap. For more reliable operation, it is not recommended that sensor taps are connected to an occupancy circuit. All connections must be in accord with the current local regulations in force. |
| Water supply | The Splash Lab sensor taps require at least 0.5bar dynamic water pressure to operate effectively; if 1 bar or more can be achieved the operation of the tap will be better. Applications with gravity-fed plumbing systems may require a booster pump to achieve the optimum operating pressure. The taps can be pressure tested to 10bar for commissioning purposes. All pipework must be thoroughly cleaned before connecting the tap to clear the pipes of any debris. |
| Access requirements | Solenoid and isolation valves must be accessible at for initial installation & commissioning and for ongoing and routine maintenance. |
| Washroom layout and planning | To prevent sensor malfunction, avoid installing sensor tap directly opposite other sensor taps/soap dispenser, other infra-red devices or reflective surfaces. The choice of other accessories in the room must also be considered, such as the waste outlet which can affect the sensor with light reflection. Care and consideration should also be given to the positioning of the lighting in the room, particularly in the case of taps with downward facing sensors. |

COMPLIANCE

WRAS
BREEAM - 1 credit
LEED - 4 points
RoHS
CE
cUL

RELATED PRODUCTS

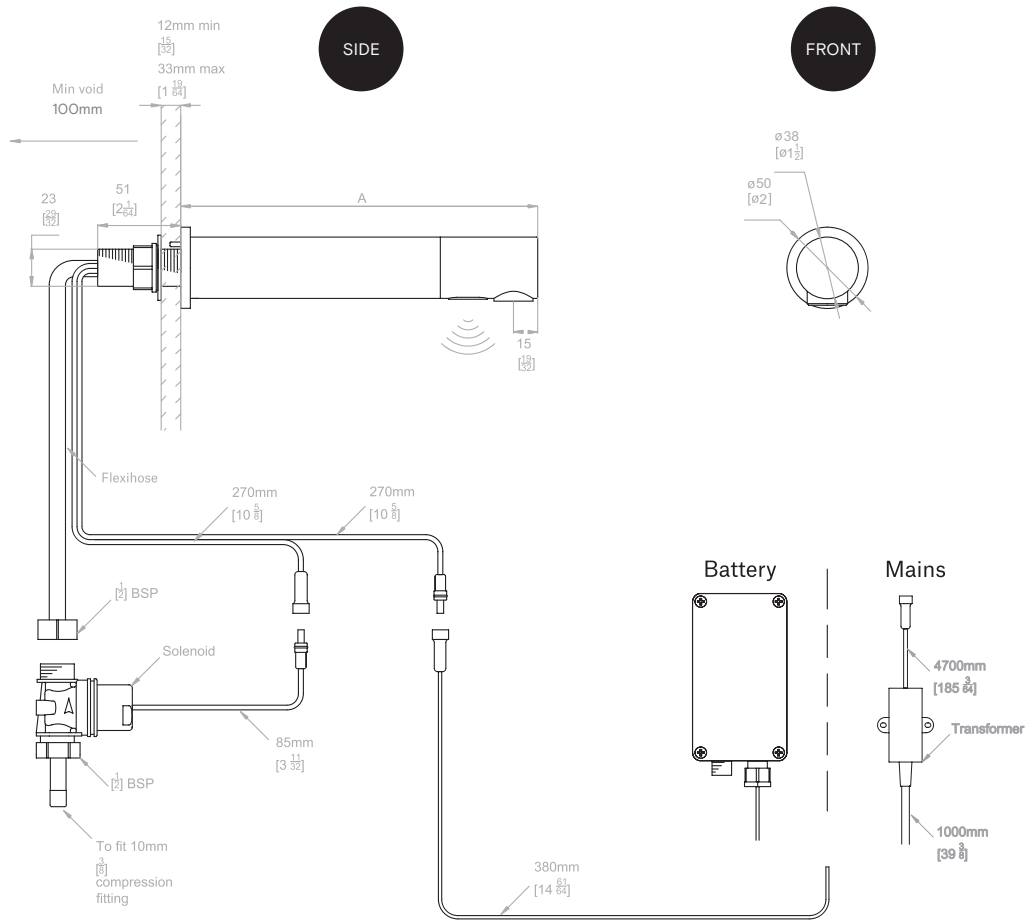
Soap dispenser L-480

TSL + HERITAGE

RELATED DOCUMENTS

Installation and maintenance manual email: info.uk@thesplashlab.com
 Warranty document email: info.uk@thesplashlab.com

TECHNICAL DRAWING



| | A | Flexi hose free length |
|-------|-----------------|------------------------|
| L-182 | 170mm [6 11/16] | 330mm |
| L-184 | 220mm [8 5/8] | 280mm |
| | | |
| | | |

