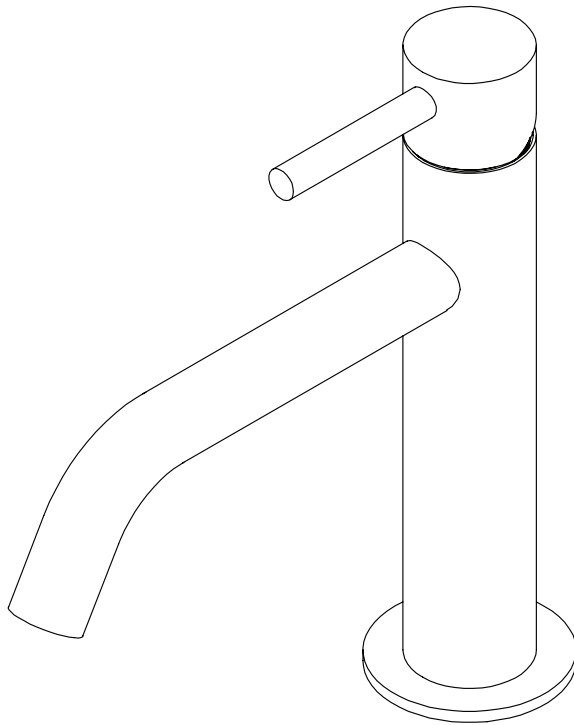


TSL.950

Deck Mounted Manual Tap



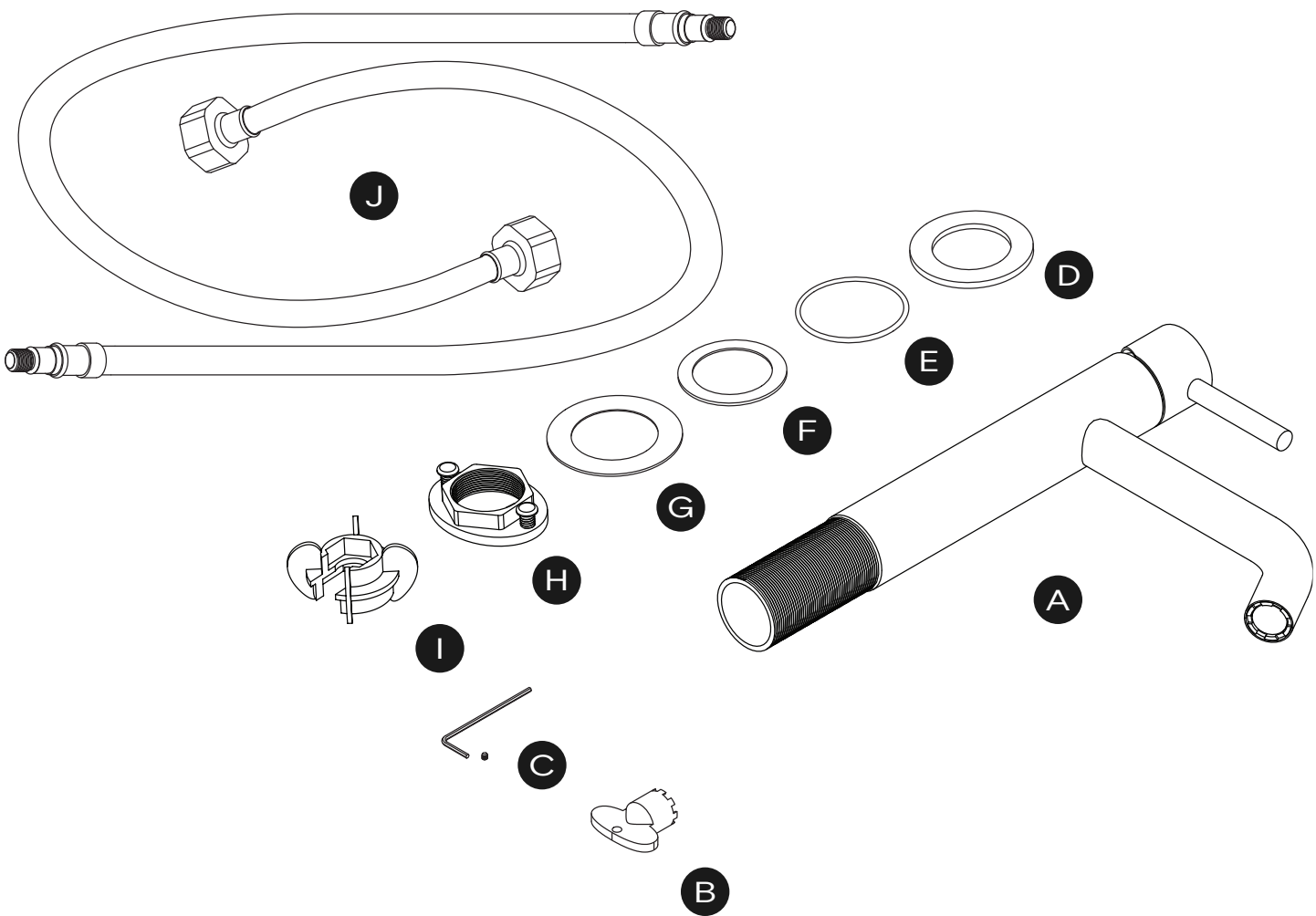
installation + maintenance

+
**THE
SPLASH
LAB**

contents

3	Box contents	
4	Technical data	
5	Technical drawing	
6	Before you install	
7 - 8	How to install	
9	Cleaning + maintenance	
10	Warranty	
11	Contact	

Deck Mounted Manual Tap



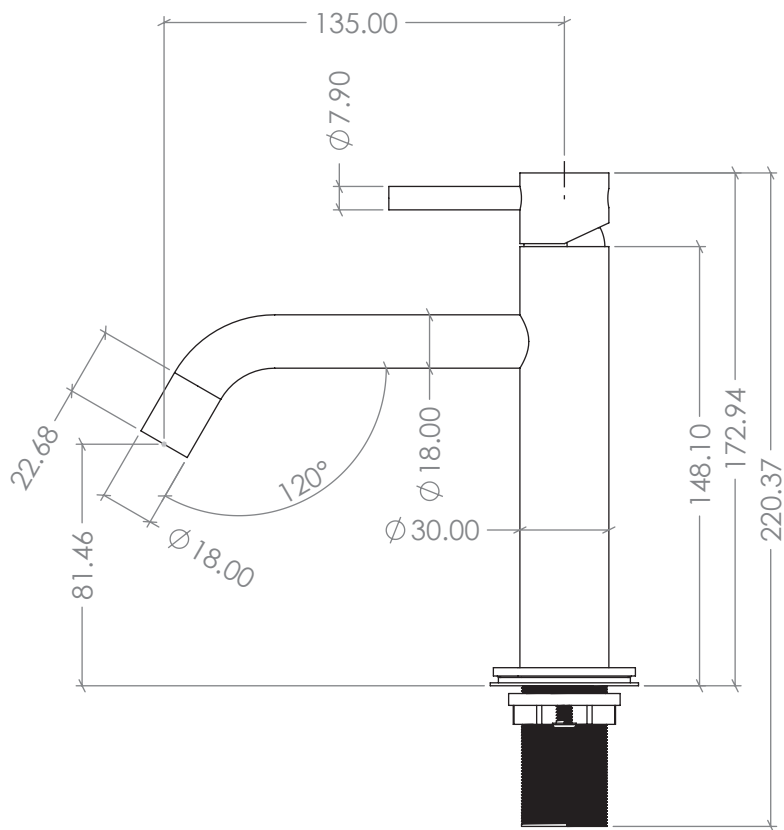
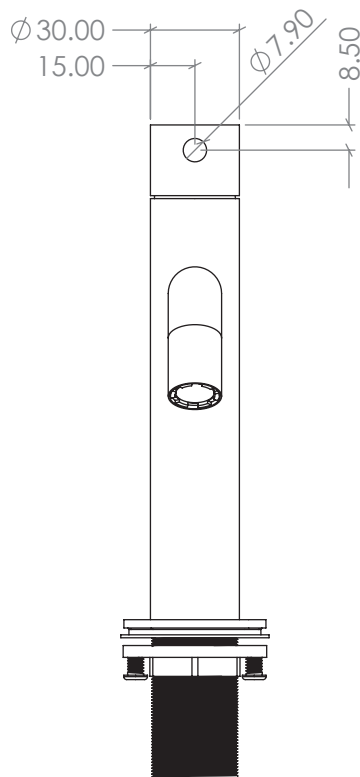
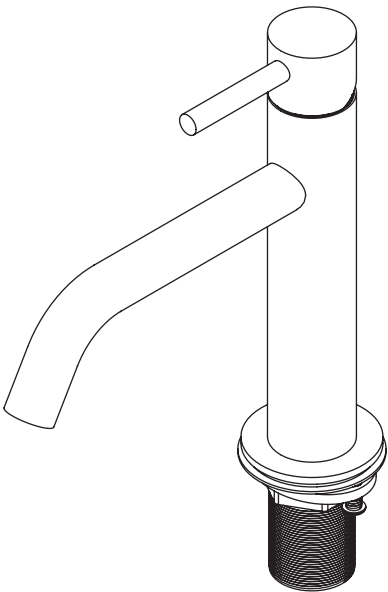
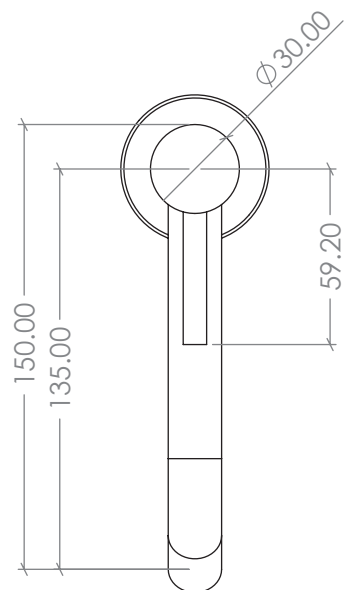
A	Deck Mounted Manual Tap	F	Rubber washer
B	Aerator key	G	Metal washer
C	Hex wrench + Nut	H	Backnut & tightening screws
D	Base bezel / collar	I	Flexi nut hand fastener
E	Base bezel sealing O-ring	J	Flexi hoses

* Unit ships assembled. Hardware not included.

technical data

	CS (Brushed satin stainless steel) BK (Brushed black PVD) BR (Brushed brass PVD) CP (Brushed copper PVD) BZ (Brushed bronze PVD)
Finishes	
Body material	PVD (colours only)
Aerator	Cascade
Water presssure (dynamic)	0.5 to 7.5 Bar [0.05 to 0.75MPa]
Water temperature (max)	60°C
Flow rates	3.8 litres / minute - Cascade flow 1.9 litres / minute - Spray flow
Also available	1.35 litres / minute - Spray flow

technical drawing



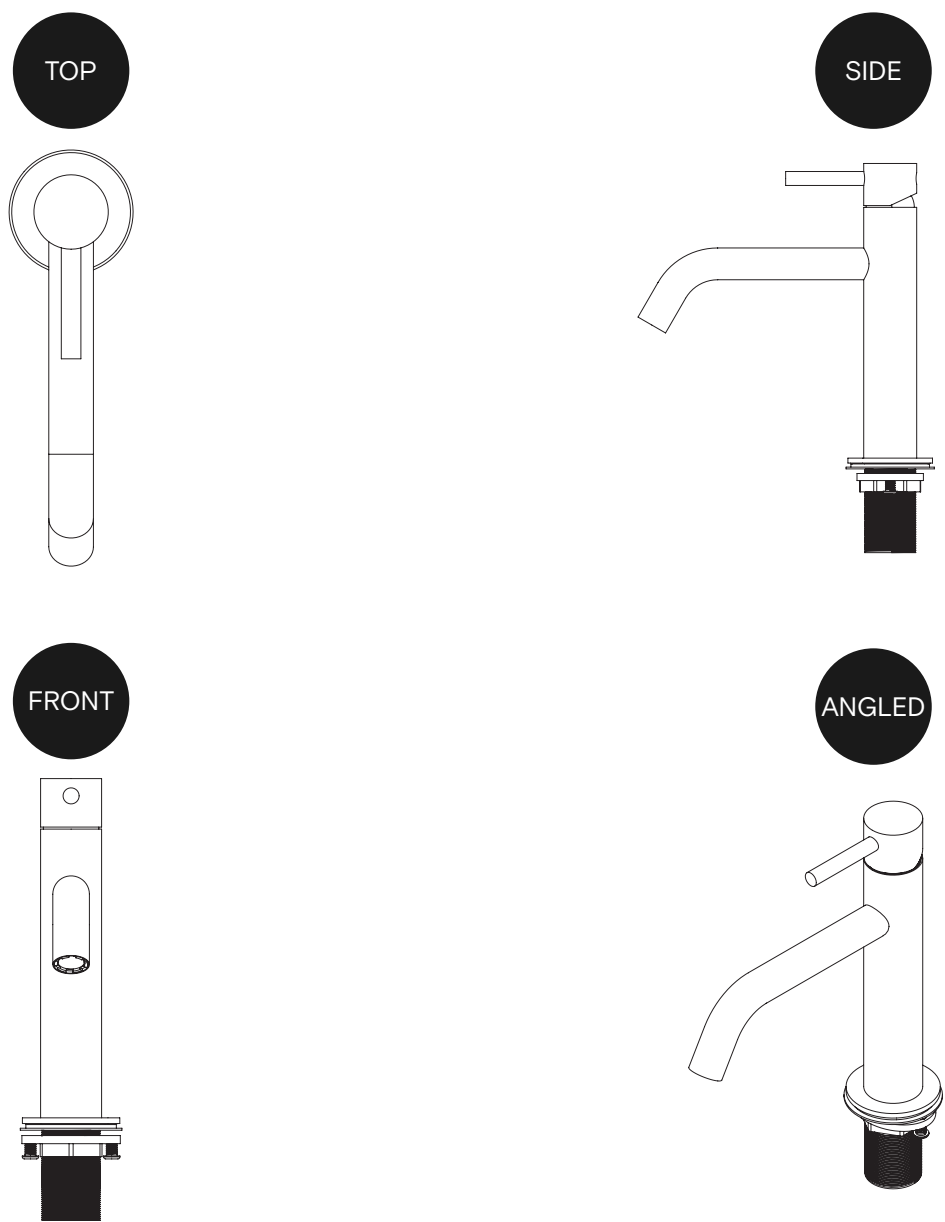
before you install

Installation requirements

Countertop Cut-out size	Ø30mm
Maximum countertop thickness	50mm

Water supply

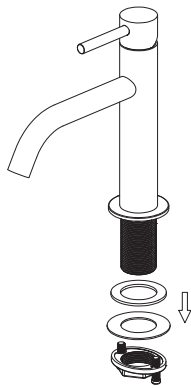
0.5 Bar is the recommended minimum pressure for the taps to operate effectively. 7.5 Bar is the maximum pressure for commissioning and is NOT recommended for general use. Gravity-fed systems may require a booster pump to achieve the optimal operating pressure. All pipework must be thoroughly cleaned and clear of any debris before connecting the tap.



how to install

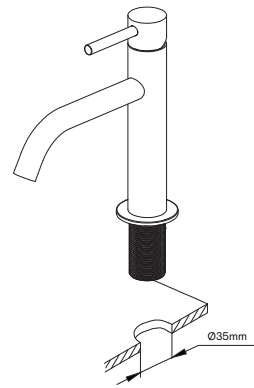
1

Predrill a hole with a 35mm diameter, in preparation to fit the mounting spigot.



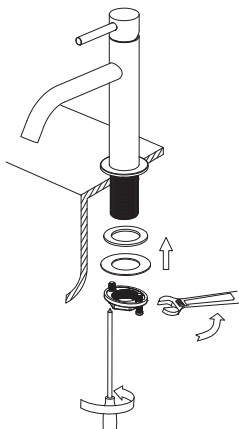
2

Assemble the tap by screwing the flexi hoses into the body by hand, ensuring that the flat washer is in place over the pipe connectors.



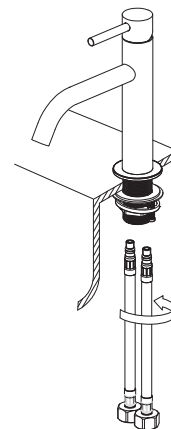
3

Feed the flexi hoses through the fixing hole of the basin, make sure there are no kinks in either tail.



4

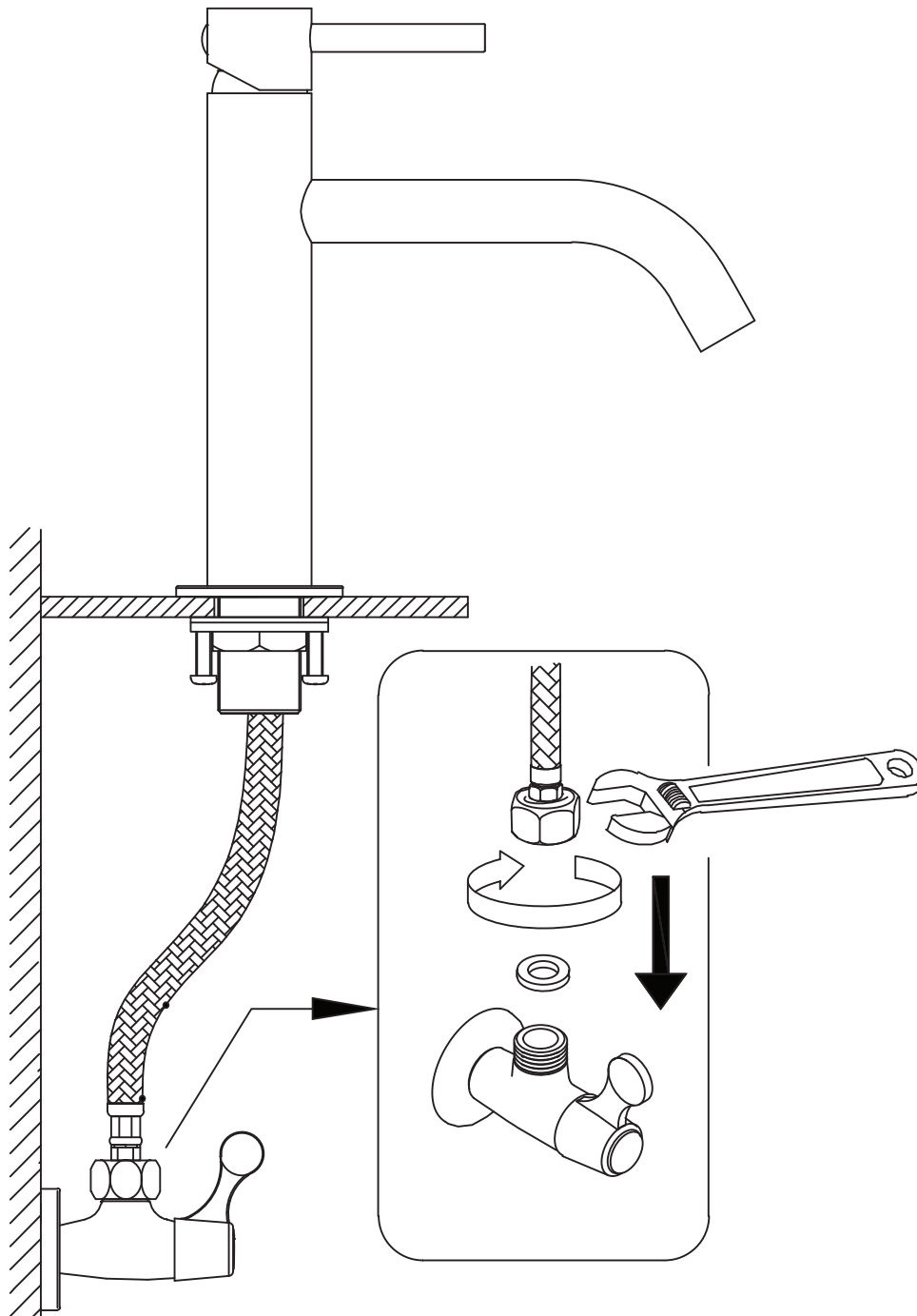
Insert the washer and fixing nut underneath the tap to hold in place and tighten the fixing nut with an adjustable spanner. Ensure the tap is correctly positioned over the basin before fully tightening the nut.



how to install

5

Connect the flexi hoses to the water supply pipes, with careful attention to matching the hot and cold supply lines with the correct pipe. Tighten the ½" nut at the base of each tail to its respective isolation valve.



cleaning + maintenance

- + Do not disassemble the ceramic core or subject it to unauthorised tampering, as this may cause water leakage.
- + Do not subject the tap or product components to overly rough handling as it may cause malfunction or leaking. Product tampering will invalidate the warranty.
- + All grades of stainless steel will stain or discolour if due care and attention is not taken. The surface must be regularly cleaned to ensure a long service life of the tap.
- + Use a soft cloth or sponge with a mild solution of soapy water as part of the regular washroom janitorial routine. Do not use abrasive or cream cleaners as these will damage the surface finish.
- + For surface cleaning of the tap use ONLY soap and water, then wipe dry with a clean cloth or towel. DO NOT use steel wool or cleaning agents containing alcohol, acid, abrasives or the like. Avoid touching any resin elements, as they may lose lustre.
- + Use of any prohibited cleaning or maintenance products or substances could damage the surface of the tap.
- + Do not let this tap sit without commissioning for long periods of time as it may encourage corrosion or mineral buildup.
- + Due to quality control procedures, some residual water may be present in the waterspout upon receipt.
- + Unscrew the aerator: Locate the aerator (the part at the end of the spout where water comes out) and unscrew it aerator key provided rinse under the tap to remove any debris.

For more information contact:

General information

info.uk@thesplashlab.com

+44 (0)161 482 7000

Technical support

info.uk@thesplashlab.com

For further information visit:

www.thesplashlab.com/uk

warranty

We believe the future is personal. With a global mindset, we challenge conventional restroom norms via product innovation to create considered washroom solutions for corporate and educational spaces. We use rich raw materials, cutting-edge automation and considered washroom design to powerfully and positively influence the lives of people. We are The Splash Lab.

Demonstrating our commitment to quality and our belief in the strength of our designs, we can offer the following warranties.

The Splash Lab will warrant that its products will be free of manufacturing and material defects during normal use and environmental conditions as detailed below:

TSL.950 Deck Mounted Manual Tap 2 year limited warranty

If a defect is found in normal use, The Splash Lab will, at their discretion, repair, provide a replacement part or product, or make appropriate adjustments. Damage caused by accident, misuse, or abuse is not covered by this warranty. Improper care and cleaning will void the warranty.

Non-operation of the product due to environmental conditions beyond our control, installation error, incorrect maintenance, water quality, fair wear and tear, incorrect or inappropriate installation, misuse and abuse is not covered by the warranty.

Proof of purchase (original sales receipt) must be provided to The Splash Lab with all warranty claims. The above warranty is valid for goods supplied within the United Kingdom.

For goods supplied outside of the United Kingdom, The Splash Lab will honor the above stated warranty periods for the parts only.

THE SPLASH LAB DISCLAIMS ANY LIABILITY FOR SPECIAL, INCIDENTAL OR CONSEQUENTIAL DAMAGES.

contact



General information

info.uk@thesplashlab.com

+44 (0)161 482 7000

The Splash Lab

Unit 8, Acorn Business Park

Heaton Lane

Stockport

Cheshire

SK4 1AS

Technical support

info.uk@thesplashlab.com

