

Single Zone Assistance Alarm Kit

TSL.SZPC

The TSL.SZPC is a Doc M Compliant 3 part kit
- Indication Module, Pull Cord Module & Reset
Module, complete with battery back-up function
and a compact design.

+ TSL.SZPC



Technical Data – Pull Cord Module

Indication	LED illuminates in red when in alarm state
Buzzer	>80db when in alarm state
Wire Gauge	1.5mm
Input Type	Ground & 2 live circuits - X1 & X2
Activation Type	Energise with a Normally Open Clean contact
Purpose	Activation and Reset Circuits
Material	304 Stainless Steel
Fixing	Surface Only
Colour	Steel Grey
Number of Outputs	2
Output Rating	12V 500mA
Output Type	1 Switched Live sharing common ground Separate output for additional sounders
Power	100 ~ 230V AC
Consumption	0.2A
Battery Backup	A23 Battery
Ingress Protection	IP20
Dimensions	Single Gang; 87x87x41mm

Technical Data – Power, Light and Buzzer Module

Power Supply	12V DC
Power Consumption	0.3W
Indicator	LED illuminates red when in alarm state
Material	304 Stainless Steel
Colour	Steel Grey
Pull Cord Length	3 Meters, with 2 triangular bangles
Dimensions	Single Gang; 87x87x41mm

Technical Data – Reset Module

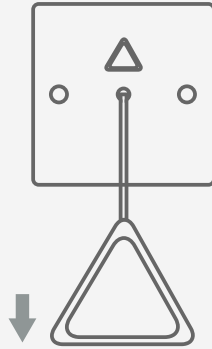
Power Supply	12V DC
Power Consumption	0.3W
Indicator	LED illuminates red when in alarm state
Material	304 Stainless Steel
Colour	Steel Grey
Buzzer	>80db when in alarm state
Dimensions	Single Gang; 87x87x41mm

Key Components/Spare Parts

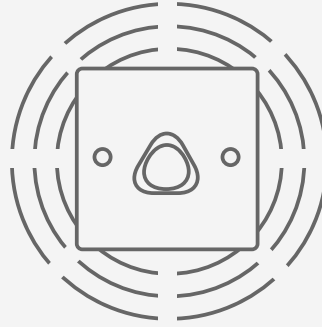
Single Zone Assistance Kit
TSL.SZPC

+ Technical drawing

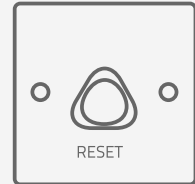
IDF



Pull triangle on cord
to activate alarm



Light indication and buzzer
will activate



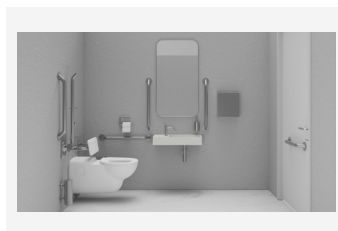
Press the RESET button
to reset the system

Warranty & Spare parts

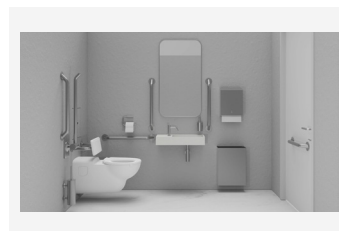
For warranty terms and conditions please visit www.thesplashlab.com

If additional spare parts are required and are not listed above, please contact us at info.uk@thesplashlab.com

Related products



**DDA Doc M Pack with Hand
Dryer**
TSL.DDA.R1



**Doc M Pack with Paper Towel
Dispenser**
TSL.DDA.R2