

# Single Zone Assistance Alarm Kit

TSL.SZPC

The TSL.SZPC is a Doc M Compliant 3 part kit  
- Indication Module, Pull Cord Module & Reset  
Module, complete with battery back-up function  
and a compact design.

**+** TSL.SZPC



#### Technical Data – Pull Cord Module

|                    |  |
|--------------------|--|
| Indication         | LED illuminates in red when in alarm state                                       |
| Buzzer             | >80db when in alarm state  |
| Wire Gauge         | 1.5mm  |
| Input Type         | Ground & 2 live circuits - X1 & X2   |
| Activation Type    | Energise with a Normally Open Clean contact                                      |
| Purpose            | Activation and Reset Circuits  |
| Material           | 304 Stainless Steel  |
| Fixing             | Surface Only   |
| Colour             | Steel Grey   |
| Number of Outputs  | 2  |
| Output Rating      | 12V 500mA  |
| Output Type        | 1 Switched Live sharing common ground<br>Separate output for additional sounders |
| Power              | 100 ~ 230V AC  |
| Consumption        | 0.2A   |
| Battery Backup     | A23 Battery  |
| Ingress Protection | IP20   |
| Dimensions         | Single Gang; 87x87x41mm  |

#### Technical Data – Power, Light and Buzzer Module

|                   |   |
|-------------------|---|
| Power Supply      | 12V DC                                  |
| Power Consumption | 0.3W                                    |
| Indicator         | LED illuminates red when in alarm state |
| Material          | 304 Stainless Steel                     |
| Colour            | Steel Grey                              |
| Pull Cord Length  | 3 Meters, with 2 triangular bangles     |
| Dimensions        | Single Gang; 87x87x41mm                 |

#### Technical Data – Reset Module

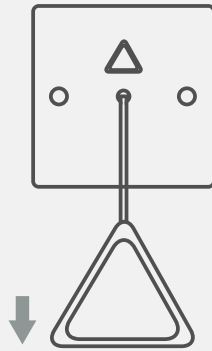
|                   |   |
|-------------------|---|
| Power Supply      | 12V DC                                  |
| Power Consumption | 0.3W                                    |
| Indicator         | LED illuminates red when in alarm state |
| Material          | 304 Stainless Steel                     |
| Colour            | Steel Grey                              |
| Buzzer            | >80db when in alarm state               |
| Dimensions        | Single Gang; 87x87x41mm                 |

## Key Components/Spare Parts

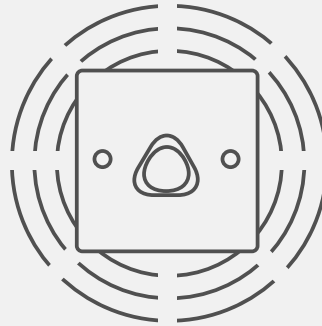
Single Zone Assistance Kit  
TSL.SZPC

### + Technical drawing

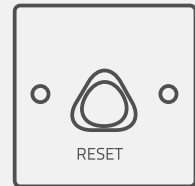
IDF



Pull triangle on cord  
to activate alarm



Light indication and buzzer  
will activate



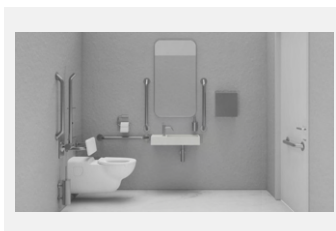
Press the RESET button  
to reset the system

### Warranty & Spare parts

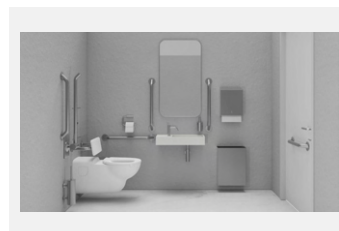
For warranty terms and conditions please visit [www.thesplashlab.com](http://www.thesplashlab.com)

If additional spare parts are required and are not listed above, please contact us at [info.uk@thesplashlab.com](mailto:info.uk@thesplashlab.com)

### Related products



**DDA Doc M Pack with Hand  
Dryer**  
TSL.DDA.R1



**Doc M Pack with Paper Towel  
Dispenser**  
TSL.DDA.R2