

Capacitive Sensor Tap

TSL.881

The TSL.881 Capacitive Sensor Tap features a sleek wall mounted spout with concealed sensor and is available in a range of finishes.

Finish	Codes	LRV*
● Satin	TSL.881.CS	58
● Black	TSL.881.BK	3
● Brass	TSL.881.BR	40
● Copper	TSL.881.CP	19
● Chrome	TSL.881.C	75

Light Reflectance Value*

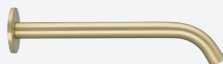
+ Satin



+ Black



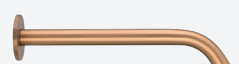
+ Brass



+ Chrome



+ Copper



Technical Data

Body Material	AISI 304 Stainless Steel
Coating Type	PVD (colours only)
Aerator	Cascade
Water Pressure (Dynamic)	0.5 to 7.5 Bar [0.05 to 0.75MPa]
Water Temperature (max)	60°C
Flow Rates	3.8 litres/minute - Cascade flow 1.9 litres / minute - Spray flow
Also available	1.35 litres / minute - Spray flow
Power supply	6V CR-P2 Lithium battery
Output (max)	800mA
Power consumption	< 80µA
Solenoid valve type	6V Latching
Water Ingress	IP55
Cable lengths	400mm - Tap (metallic mass) connection 800mm - Solenoid valve connection
Sensor type	Capacitive
Default Mode	Proximity
Sensitivity (Proximity mode only)	5 pre-settings (adjustable using AQUASTOP button)
Comfort delay	1 sec
Security time-out	60 sec
AQUASTOP Function	30 sec
Operating Temperature	0 to 40°C
Response Time (max)	< 300ms

Installation requirements

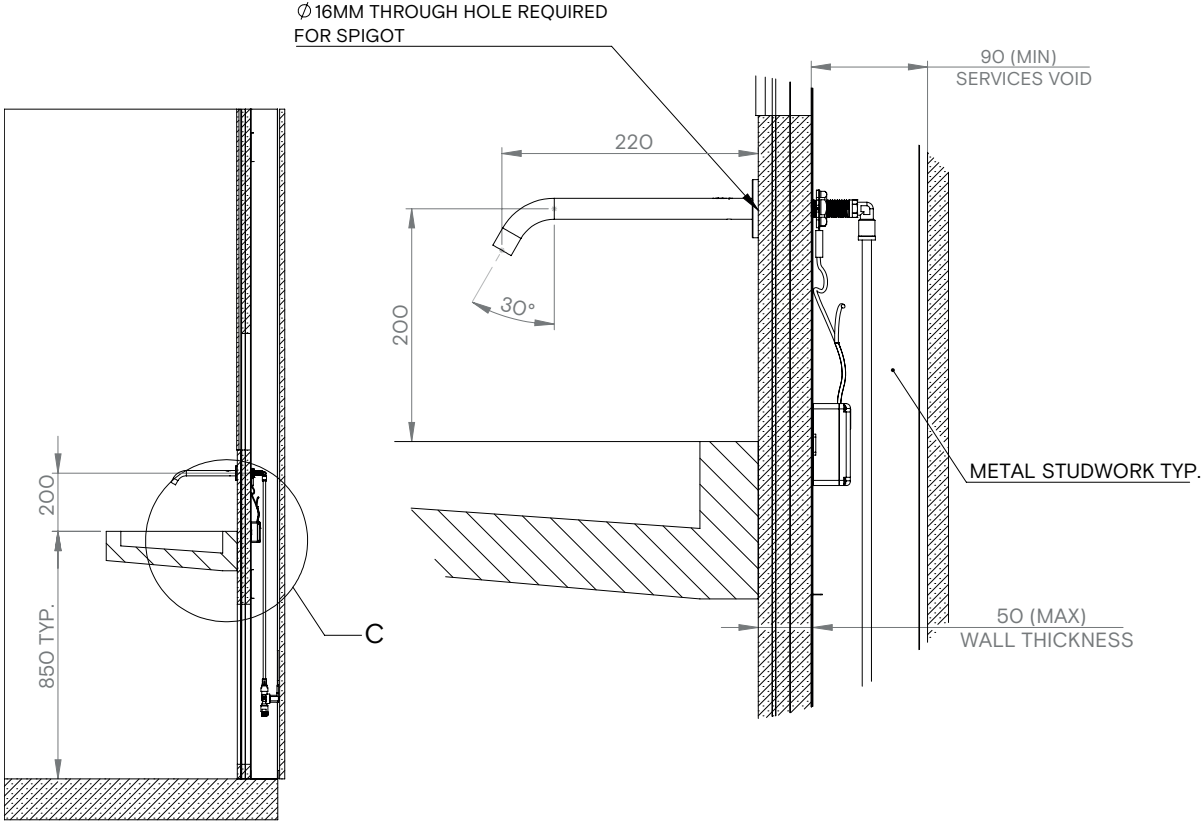
Wall Cut-out Hole Size	Ø16mm (Spigot)
Depth of Wall Cavity (min)	90mm
Wall Thickness (max)	50mm (incl. finishes)
Plumbing Connection	½" BSP (female) brass fitting is required to connect to the solenoid valve housing
Power supply cable	To be hard wired in to fused connection unit (FCU) or spur
Water supply	1.0 Bar is the recommended minimum pressure for the taps to operate effectively. 7.5 Bar is the maximum pressure for commissioning and is NOT recommended for general use Gravity-fed systems may require a booster pump to achieve the optimal operating pressure All pipework must be thoroughly cleaned and clear of any debris before connecting the tap
Washroom layout	Solenoid valve must be accessible for installation, commissioning and ongoing maintenance.

Compliance & certificates

BREEAM, LEED	
EMC compliance	Electromagnetic compatibility directive 2004/108/CE, and Low Voltage 2006/95/CR
WRAS	Certificate No 1809302

SIDE

DETAIL



DETAIL C
SCALE 1:5

Key Components/Spare Parts

Solenoid Connector Cable
TSLP.120032

Mains Power Supply 6V
TSLP.270066

Solenoid Valve
TSLP.120030

Aerator Key
TSLP.260050

Aerator Cascade 3.8L/min Airated
TSLP.260062

Aerator Cascade 1.89L/min Spray
TSLP.260063

Basket Filter for Solenoid Valve
TSLP.08530015

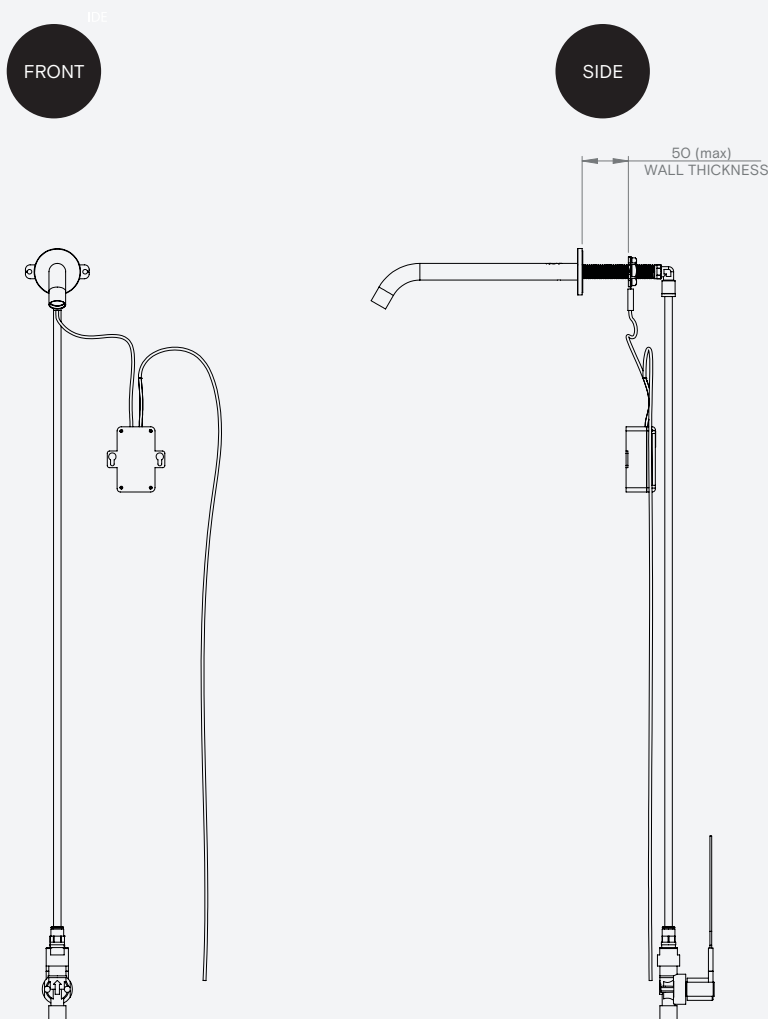
Optional Extras

Lithium Battery 6V
TSLP.270030

Battery Holder
TSLP.270029

Aerator Cascade 1.35L/min Spray
TSLP.260051

+ Technical drawing



Warranty & Spare parts

For warranty terms and conditions please visit www.thesplashlab.com
If additional spare parts are required and are not listed above, please contact us at info.uk@thesplashlab.com

Related products



Wall Mounted Sensor Soap Dispenser
TSL.467



Wall Mounted Manual Soap Dispenser
TSL.470



150mm Capacitive Sensor Tap
TSL.883



Monolith M Series - 450mm
TSL.M