

TSL.470

soap dispenser

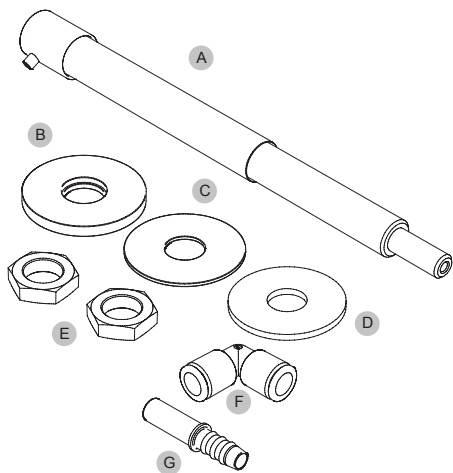
installation + maintenance

+ THE
SPLASH
LAB

contents

3	Box Contents
3	Technical Data
4	Before You Install
5	How to Install
7	Commissioning
7	Operation
8	Maintenance
8	Cleaning
8	Soap
9	Refilling
10	Warranty
11	Contact Details

box contents



A	Dispenser mechanism
B	Wall flange - large
C	Rubber backing washer
D	Steel backing washer
E	Fixing nuts
F	Pushfit elbow pipe connector
G	Straight push-in pipe connector
H	Pick-up Pipe (not pictured)
I	1-Litre Soap tank (not pictured)

technical data

Finishes	TSL .470CS Brushed stainless steel TSL .470CP Brushed copper TSL .470BK Brushed black TSL .470BZ Brushed bronze TSL .470BR Brushed brass
Weight	420g
Body	316 AISI Stainless steel
Recommended soap viscosity	100 to 3800cPs Liquid soap only. Not for use with foam soap, alcohol gel or hand sanitizer
Recommended soap system	L-ST series, to be specified separately
Feed pipe connection	8mm push-fit connector to L-ST series feed system
Tested to	2,000,000 depressions
Standard discharge	1cc

before you install

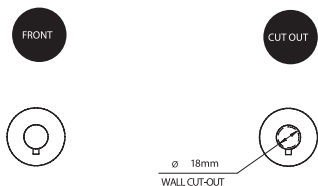
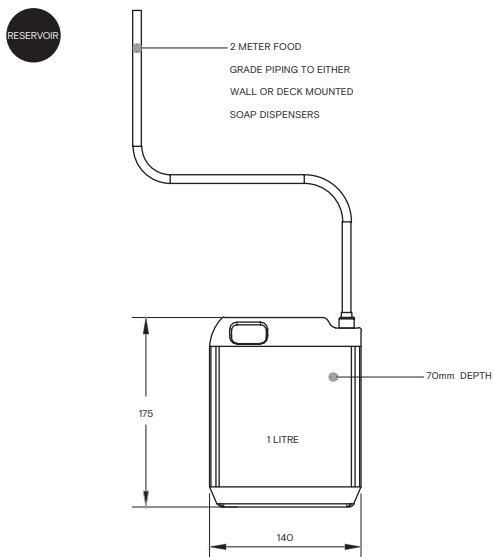
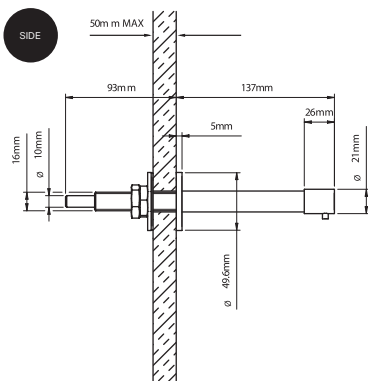
Location

The TSL .470 dispenser is normally mounted in the wall panelling above a basin or counter-top. As a guide, we would recommend that a minimum distance of 100mm between the dispenser and any adjacent tap, but this is ultimately only a guide measurement.

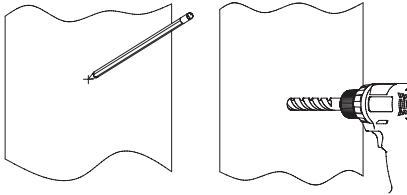
It is important that the reservoir is mounted below the dispenser, otherwise there is a risk that the soap in the reservoir will syphon out of the reservoir. The dispenser is designed for the soap to be drawn from a reservoir mounted below the level of the dispenser.

NOTE: The L470 soap dispenser needs to be used with one of The Splash Lab's Liquid soap feed systems listed below (to be specified separately)

- LMT1 Single feed soap system – 1 litre reservoir
- LST1 Single feed soap system – 5 litre reservoir
- LST2 Multi-feed soap system – dual feed – 5 litre reservoir
- LST3 Multi-feed soap system – triple feed – 5 litre reservoir
- LST4 Multi-feed soap system – four feed – 5 litre reservoir

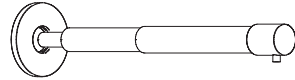


how to install



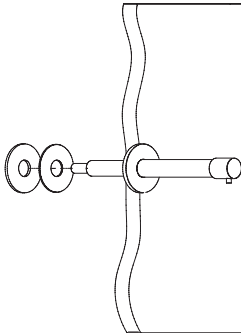
1

Mark the dispenser position and drill 18mm Ø hole to accept the brass dispenser tail.



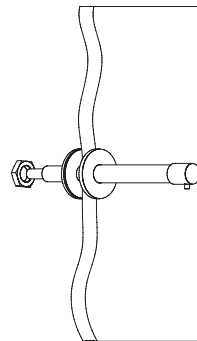
2

Assemble the wall flange to the dispenser ensuring the finished face will not be against the wall.



3

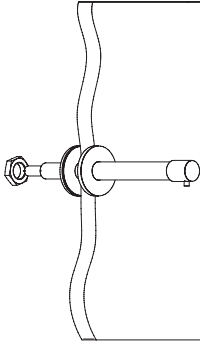
Pass the dispenser tail through the mounting hole and place the rubber backing washer and steel washer over the dispenser tail.



4

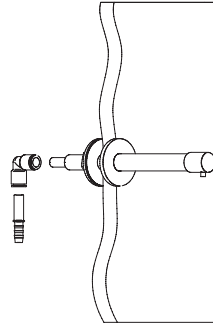
Assemble the 1st brass locknut onto the dispenser tail ensuring that the outlet nozzle is pointing downwards. Tighten the nut by hand against the backing washer, and then tighten using a wrench 1 full turn. Tighten the nut only sufficiently enough to secure the dispenser – over-tightening may damage both the dispenser and the building fabric.

how to install



5

Once the dispenser is secure & correctly orientated, assemble the second locknut. Use 2 spanners (one on each nut) and firmly lock the nuts together. Ensure you maintain the correct orientation of the dispenser during this operation.



6

Press the elbow connector onto the straight pipe connector at the rear of the dispenser. Insert the pipe-barb into the PVC hose, and this connector can then be pressed into the previously fitted elbow connector.

commissioning

Fill the reservoir with soap and operate the dispenser until soap is dispensed from the spout.

operation

The cap is depressed by the user, which draws a measured amount of soap (1ml) along the feed pipe from the reservoir, then through the pump, and the soap is dispensed from the spout onto the user's hands.

maintenance

Occasionally purge the dispenser by pumping warm water (hand warm) through the unit. This will remove any congealed soap.

cleaning

The dispenser should be cleaned with a soft cloth and a mild solution of soapy water as part of the regular cleaning regime. Do not use abrasive or cream cleaners as these will damage the surface finish.

soap

A good quality liquid soap of viscosity 100 – 3800 cPs units should be used. Hand cleaners containing abrasive particles should not be used as this will cause damage to the pump mechanism. The dispenser mechanism is not compatible with alcohol gels or hand sanitisers.

refilling

Single feed piped system

The cap with the soap feed pipe attached is unscrewed from the jerry-can type bottle. Liquid soap can now be poured into the bottle until the desired level is reached, and the cap re-fitted.

Alternatively, the feed pipe can be inserted into a replacement container of soap.

Multi-feed piped system

The multiple feed pipe and the support clips are to be removed from the neck of the soap reservoir, and the soap can be poured in until the desired level is reached. The feed pipes can now be replaced into the reservoir, ensuring the ends of the soap pipes are beneath the surface of the soap.

Alternatively, the feed pipe can be inserted into a replacement container of soap

The dispenser should now be operated to ensure that soap is dispensed.

The level of soap in the reservoirs should be checked regularly to ensure the soap feed pipes are always dipped into the soap. If it does happen that the soap level is allowed to fall below the minimum required, there will be an airlock introduced into the pipe, which will then need to be re-primed. Priming of the system is achieved by depressing the pump until soap is dispensed consistently.

THE SOAP DISPENSERS CONTAIN NO USER-SERVICABLE PARTS.

warranty

We believe the future is personal. With a global mindset, we challenge conventional restroom norms via product innovation to create considered washroom solutions for corporate and educational spaces. We use rich raw materials, cutting-edge automation and considered washroom design to powerfully and positively influence the lives of people. We are The Splash Lab.

Demonstrating our commitment to quality and our belief in the strength of our designs, we can offer the following warranties.

The Splash Lab will warrant that its products will be free of manufacturing and material defects during normal use and environmental conditions as detailed below:

Soap & paper dispensers 1 year

If a defect is found in normal use, The Splash Lab will, at their discretion, repair, provide a replacement part or product, or make appropriate adjustments. Damage caused by accident, misuse, or abuse is not covered by this warranty. Improper care and cleaning will void the warranty.

Non-operation of the product due to environmental conditions beyond our control, installation error, incorrect maintenance, water quality, fair wear and tear, incorrect or inappropriate installation, misuse and abuse is not covered by the warranty.

Proof of purchase (original sales receipt) must be provided to The Splash Lab with all warranty claims.

The above warranty is valid for goods supplied within the United Kingdom.

For goods supplied outside of the United Kingdom, The Splash Lab will honour the above stated warranty periods for the parts only.

THE SPLASH LAB DISCLAIM ANY LIABILITY FOR SPECIAL, INCIDENTAL OR CONSEQUENTIAL DAMAGES.

contact



General information

info@thesplashlab.com

+44 (0) 161 482 7000

Technical support

technical@thesplashlab.com

For further contact information visit:

www.thesplashlab.com

