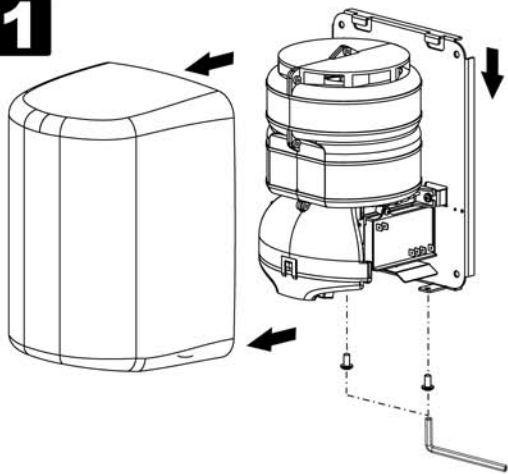


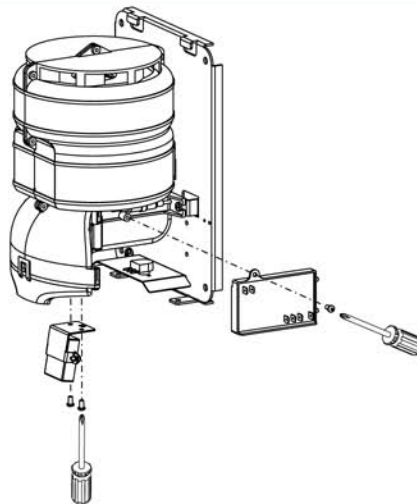
Brushes replacement

1



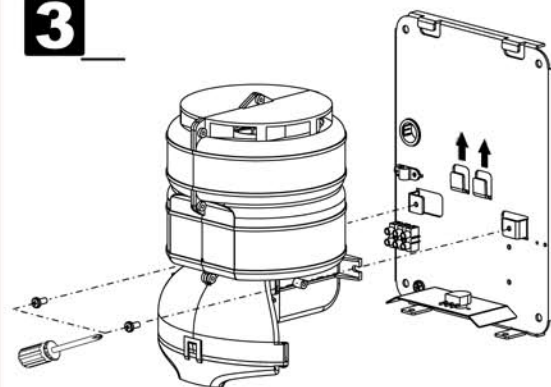
- Turn off power to the dryer at electrical panel.
- Remove cover.

2



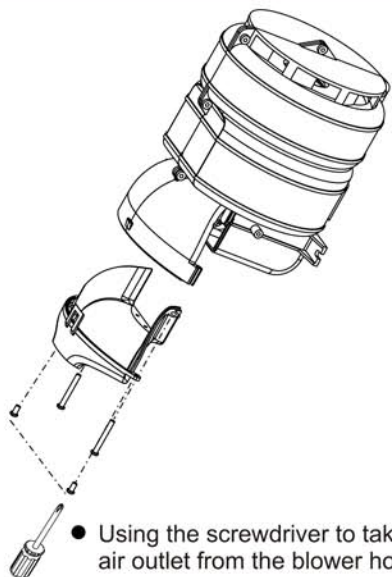
- Disconnect wires from the circuit board.
- Using the screwdriver to take off the sensor bracket and circuit board housing from the blower housing.

3



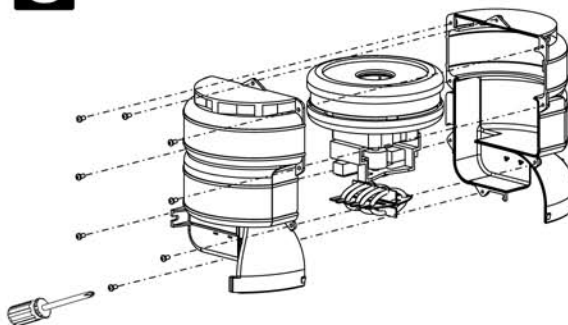
- Using the screwdriver to take off the the blower housing from the base plate for the two sides.

4



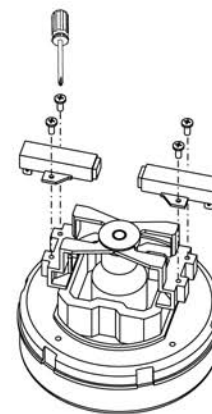
- Using the screwdriver to take off the air outlet from the blower housing .

5



- Using the screwdriver to take off the fixed screws from the blower housing for the two sides.

6



- Disconnect wires from the brush.
- Using the screwdriver to take off the fixed screws from the brush motor for the two sides.
- Replace with new brush and fasten the fixed screw, then connect the wire on the motor.

THIS UNIT MUST BE FITTED AND SERVICED BY SUITABLY QUALIFIED PERSONNEL