

# TSL.467

wall mounted soap dispenser

installation + maintenance

+ THE  
SPLASH  
LAB

# contents

<b>3</b>	Safety and Warnings
<b>4</b>	Box Contents
<b>5</b>	Diagram
<b>6</b>	Technical Data
<b>8</b>	Before You Install
<b>9</b>	Dimensions
<b>10</b>	How To Install
<b>13</b>	Commissioning & Operation
<b>14</b>	Cleaning & Soap
<b>15</b>	Maintenance & Refilling
<b>16</b>	Troubleshooting
<b>17</b>	Warranty
<b>18</b>	Contact Details

# TSL.467

## Read and save these instructions

### WARNING

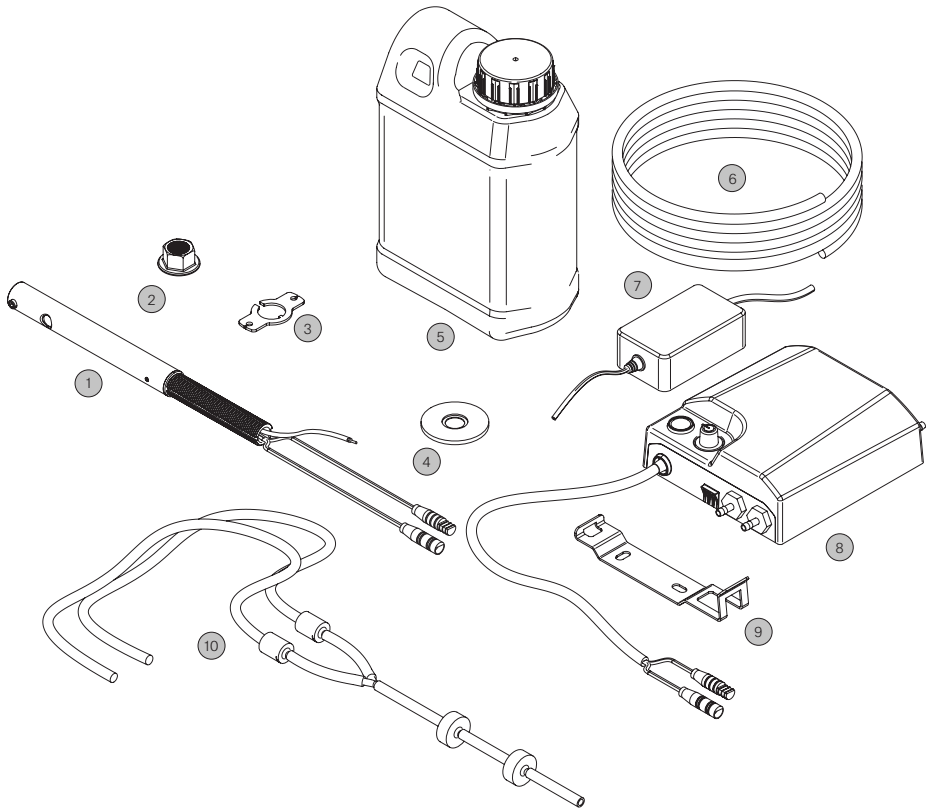
- + Use this unit only in the manner intended by the manufacturer. If you have questions, contact the manufacturer (see back page for more details)

### For more information contact:

Tel: +44 (0)161 482 7000

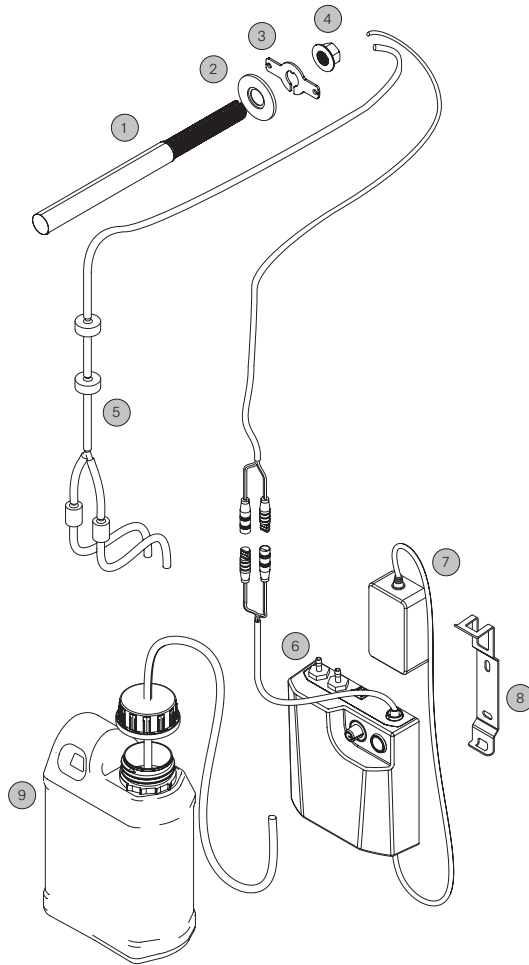
Email: [technical.uk@thesplashlab.com](mailto:technical.uk@thesplashlab.com)

# box contents



- 1 Dispenser head assembly
- 2 Fixing nut
- 3 Anti rotation washer
- 4 Base collar
- 5 Soap reservoir
- 6 Soap supply pipe - 3 metres
- 7 Power Supply Unit (PSU)
- 8 Soap foamer pump unit
- 9 Pump unit mounting bracket
- 10 Soap foaming chamber pipeset

# diagram



**1** Dispenser head assembly

**2** Base collar

**3** Anti rotation washer

**4** Fixing nut

**5** Soap foaming chamber pipeset

**6** Soap foamer pump unit

**7** Power Supply Unit (PSU)

**8** Pump unit mounting bracket

**9** Soap reservoir

# technical data

## Overview

---

The TSL.467 is a stainless steel wall mounted soap dispenser, available in a variety of coloured finishes.

Codes	Power	Finishes
TSL.467.CS	Mains	Brushed Stainless Steel
TSL.467.CP	Mains	Brushed Copper
TSL.467.BK	Mains	Brushed Black
TSL.467.BR	Mains	Brushed Brass
TSL.467.BZ	Mains	Brushed Bronze

## Light Reflectance Values

---

Brushed Stainless Steel	58
Brushed Copper	19
Brushed Black	3
Brushed Brass	40
Brushed Bronze	17

## Compliance

---

CE PSU conforms to RoHS, REACH, EN15091

## Related Documents

---

Datasheet	email: <a href="mailto:technical.uk@thesplashlab.com">technical.uk@thesplashlab.com</a>
Warranty Document	email: <a href="mailto:technical.uk@thesplashlab.com">technical.uk@thesplashlab.com</a>

# technical data

## Related Products

---

Soap dispenser	TSL.470 Manual wall mounted soap dispenser
Sensor operated taps	TSL.884 Wall mounted IR sensor tap TSL.882 Wall mounted IR sensor tap

## Technical Data

---

Weight	0.25Kg
Material	AISI 304 Stainless Steel
Power supply	110V - 230V ac; 50/60Hz
Output	1000mA
Standby power	0.1W
Standard discharge	1.0ml
Coating type	PVD (colours only)
Recommended soap type	Foam soap - <10cPS viscosity. Not suitable for liquid soaps, alcohol gels or hand sanitisers
Soap reservoir capacity	1 Litre (standard) 5 Litres (optional remote feed)
Sensor range	Preset 70mm (adjustable using seperate controller if required)
Max range	400mm
Min range	60mm
Sensor type	Infrared
Response time (max)	< 300ms
Security cut-off time	30 seconds
Connection to sensor cable	1700mm
Connection to fused supply	1780mm

# before you install

## Caution

---



- + The TSL.467 parts must be put together correctly before installation.
- + All parts must be installed correctly before powering up the system.

## Access Requirements

---

Soap reservoir must be accessible for installation, commissioning and for ongoing/routine maintenance.

**Front access:** If the underside of the wash basin is tiled in, or is fixed onto a vanity unit, a front hatch or panel(s) must be constructed below the wash basin for ongoing maintenance access.

## Installation Requirements

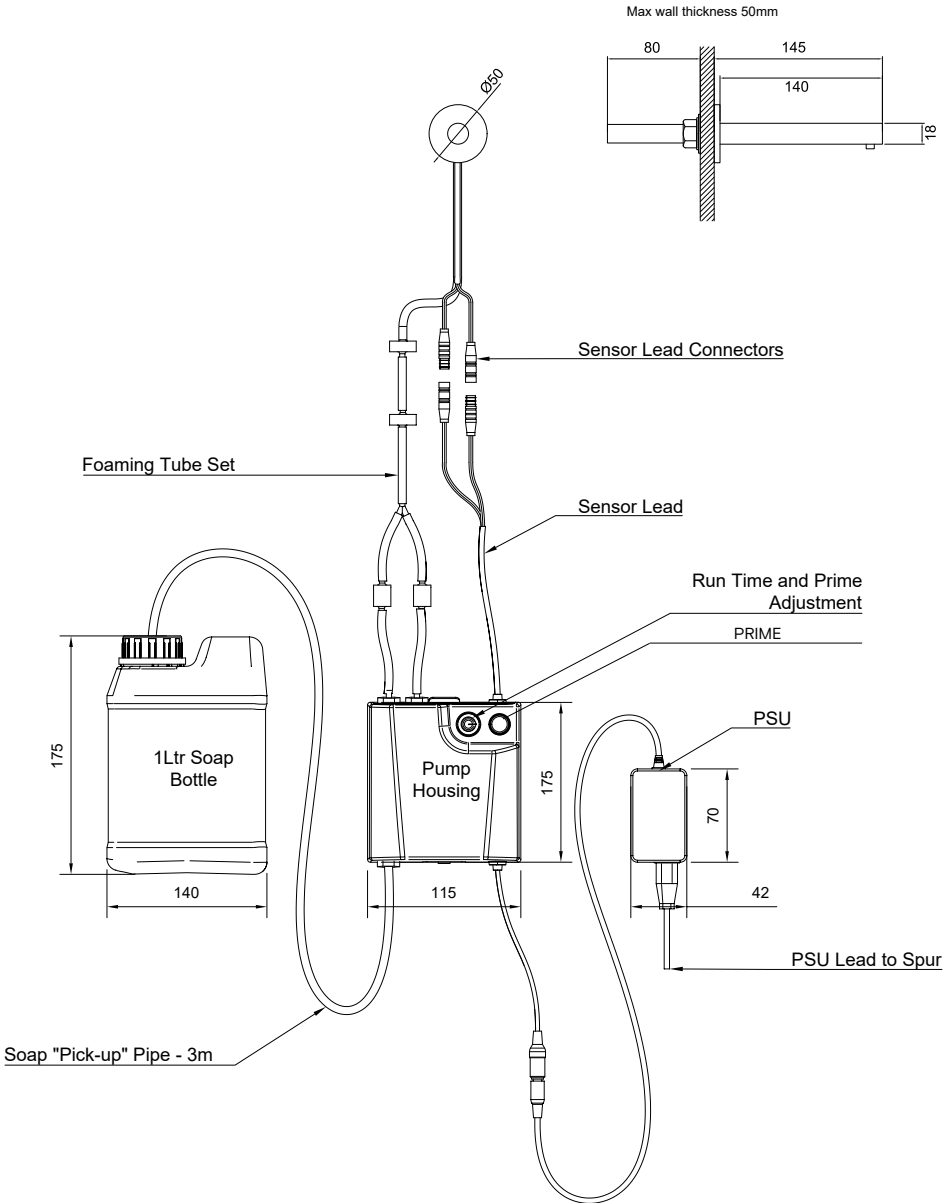
---

1. The TSL.467 is normally mounted in the wall panelling above a basin or counter-top. As a guide we would recommend that a minimum distance of 100mm between the dispenser and any adjacent tap, but this is ultimately only a guide measurement.
2. The TSL.467 is supplied with a single-feed reservoir to be connected with a flexible feed-pipe to the dispenser. If a multifeed system is required, this needs to be specified separately.

Maximum wall thickness	50mm
Access requirements	Power supply units and pump units must be accessible for initial installation & commissioning and for ongoing/routine maintenance.
Washroom layout	Soap pump and reservoir must be accessible for installation, commissioning and ongoing maintenance.
Power supply	3am fused spur to be connected to IP68 transformer supplied. It is not recommended that sensor-operated soap dispensers are connected to an occupancy circuit.



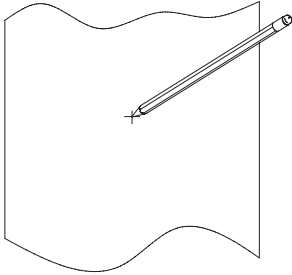
# technical drawing



# how to install

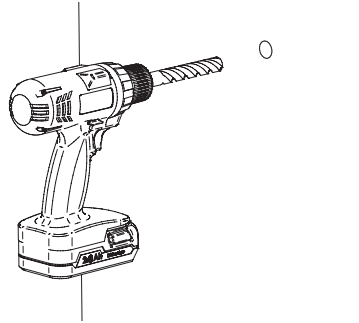
## Soap dispenser installation

---



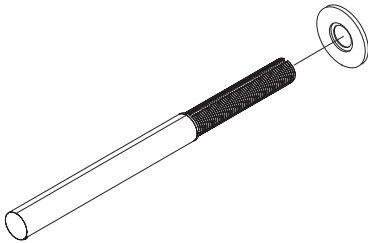
**1**

Mark the dispenser centres onto the surface for installation.



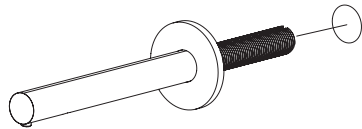
**2**

Drill 18mm diameter hole through mounting surface and into the wall cavity.



**3**

Slide the collar over the spigot.



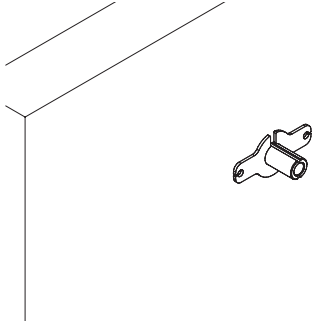
**4**

Slot the spigot end of the dispenser through the pre-drilled hole.

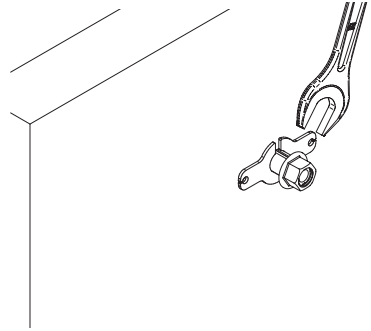
# how to install

## Soap Installation

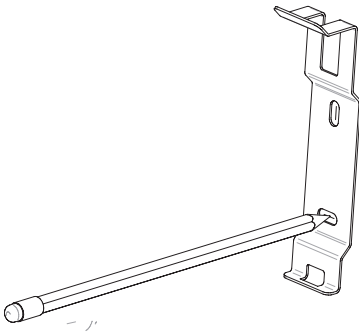
---



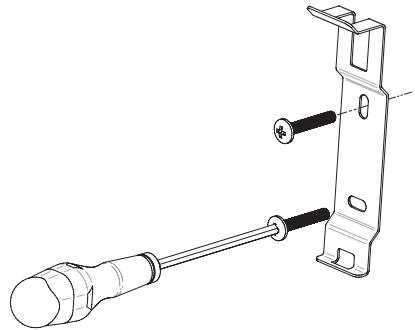
- 5**  
Fit the anti-rotational washer over the spigot.



- 6**  
Thread the locking nut onto the spigot and tighten with a spanner



- 7**  
Mark the wall for the pump mounting bracket in the desired location.

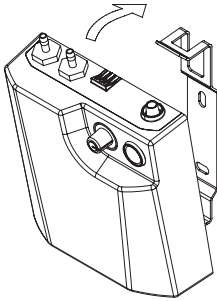


- 8**  
Fit the pump bracket using appropriate fixings.

# how to install

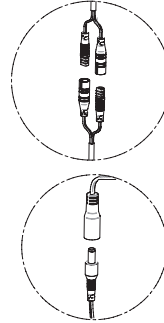
## Soap Installation

---



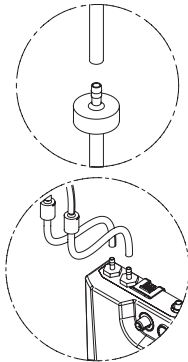
9

Fit the soap foamer pump unit to the bracket.



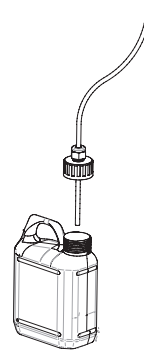
10

Connect the sensor and power supply cables from the dispenser head to the corresponding cables from the soap foamer pump.



11

Connect the soap foamer pipeset to the dispenser head, and the two inlet pipes to 2 pipe fittings on the top of the soap foamer unit.



12

Connect the soap pick-up pipe to the bottom of the soap foamer unit, and fit the opposite end of the pipe to the soap reservoir.

Once all nuts are tightened, test the soap dispenser and allow soap to flow.

### WARNING:

Ensure all connections are fully tightened to ensure full seal of the soap.

# commissioning

## IMPORTANT

The dispenser is only to be used with a compatible foam soap, with a viscosity of less than 10cPs. It is not suitable for use with liquid or pearl soap, alcohol gels or hand sanitisers.

### **Adjusting the soap dispensing volume:**

1. Switch on the power supply at the fused spur or socket.
2. Turn on the pump by turning the dispense dial clockwise.
3. Depress and hold the 'Prime' button until soap is dispensed.
4. Activate the dispenser by placing your hand underneath the sensor to check the volume of the soap that is dispensed from the nozzle.
5. The volume of soap dispenses can be adjusted by turning the 'Dispense' dial clockwise to increase the soap volume, or anticlockwise to reduce the soap volume.

# operation

- + The user places their hands within detection range of the sensor to activate the soap dispenser.
- + The motor will start and soap is dispensed onto the user's hands.
- + The motor will stop when the user's hands are removed from the detection range.

# cleaning

- + Take extra care when cleaning decorative surfaces.
- + For surface cleaning of the tap use ONLY soap and water, then wipe dry with a clean cloth or towel.
- + DO NOT use steel wool or cleaning agents containing alcohol, acid, abrasives or the like.
- + Use of any prohibited cleaning or maintenance products or substances could damage the surface of the tap.
- + When cleaning bathroom tiles, the taps should be protected from any splattering of harsh cleansers.

All grades of stainless steel will stain or discolour if due care and attention is not taken. The surface must be regularly cleaned to ensure a long service life of the tap.

Use a soft cloth or sponge with a mild solution of soapy water as part of the regular washroom janitorial routine. Do not use abrasive or cream cleaners as these will damage the surface finish.

If further information is required, contact The Splash Lab technical team for more detailed stainless steel care guidelines.

# soap

A good quality foam soap of viscosity <10 cPs units should be used. Hand cleaners containing abrasive particles should not be used as this will cause damage to the pump mechanism. The dispenser mechanism is not compatible with alcohol gels or hand sanitisers.

# maintenance

- + The soap dispenser should be serviced on a regular basis to ensure long service life of the unit.
- + Isolate the unit from the power supply before any servicing or maintenance work is carried out.
- + The dispenser should be activated at least once a day to ensure that soap does not congeal in the pipework.

# refilling

## Single feed reservoir

1. Unscrew the reservoir from the connector cap.
2. Fill the reservoir with foam soap of viscosity in the range  $<10$  cPs.
3. Screw reservoir onto the connector,
4. Press and hold the prime button until soap is dispensed from the spout.

## Multi-feed pipe system

1. Remove the support clips and pipes from the neck of the soap reservoir,
2. Fill reservoir with soap until desired level is reached.
3. Replace the feed pipes in the reservoir, ensuring the ends of the soap pipes are beneath the surface of the soap.
4. Alternatively, the feed pipes can be inserted into a replacement container of soap.
5. Press and hold the prime button until soap is dispensed from the spout

The level of soap in the reservoirs should be checked regularly to ensure the soap feed pipes are always dipped into the soap. If it does happen that the soap level is allowed to fall below the minimum required, there will be an airlock introduced into the pipe, which will then need to be re-primed. Priming of the system is achieved by pressing the prime button on the pump unit.

# troubleshooting

Problem	Cause	Solution
Dispenser does not run	Power Failure to dispenser	Check mains supply to PSU and reconnect if necessary
		Check output from PSU, and replace PSU if there is zero voltage
		Check that the power supply cable is correctly connected to the power cable on the pump unit
	Sensor cables are disconnected	Check that the sensor cables are fully connected to the corresponding cables from the foam pump unit
Dispenser can be heard to run, but no soap is dispensed	Soap pick-up pipe is not fully immersed in the soap	Reconnect the soap pipe, ensuring the end is fully immersed in the soap
	Soap reservoir is empty	Replace or replenish the soap reservoir
	Leaks in the pipework	Inspect all the pipework and connection for air leaks and ensure all connections are pushed fully together
Soap foam is not of the desired consistency	Soap / air ratio is not correctly set for the installation	Adjust soap / air ratio using the adjuster screw through the back plate of the pump housing (remove the pupm unit from the wall bracket to make the change)
Dispenser runs constantly	Sensor is detecting an object or reflection	Remove the obstruction or cause of reflection



# warranty

We believe the future is personal. With a global mindset, we challenge conventional restroom norms via product innovation to create considered washroom solutions for corporate, public and hospitality spaces. We use rich raw materials, cutting-edge automation and considered washroom design to powerfully and positively influence the lives of people.

Demonstrating our commitment to quality and our belief in the strength of our designs, we offer the following warranties.

The Splash Lab warrant that its products will be free of manufacturing and material defects during normal use and environmental conditions as detailed below:

**TSL.467:            2 years parts & labour**

If a defect is found in normal use, The Splash Lab will, at their discretion, repair, provide a replacement part or product, or make appropriate adjustments. Damage caused by accident, misuse, or abuse is not covered by this warranty. Improper care and cleaning will void the warranty.

Non-operation of the product due to environmental conditions beyond our control, installation error, incorrect maintenance, water quality, fair wear and tear, incorrect or inappropriate installation, misuse and abuse is not covered by the warranty.

Proof of purchase (original sales receipt) must be provided to The Splash Lab with all warranty claims.

The above warranty is valid for goods supplied within the United Kingdom.

For goods supplied outside of the United Kingdom, The Splash Lab will honour the above stated warranty periods for the parts only.

THE SPLASH LAB DISCLAIM ANY LIABILITY FOR SPECIAL, INCIDENTAL OR CONSEQUENTIAL DAMAGES.

# contact



## **General information**

[info.uk@thesplashlab.com](mailto:info.uk@thesplashlab.com)

+44 (0) 161 482 7000

## **Technical support**

[technical.uk@thesplashlab.com](mailto:technical.uk@thesplashlab.com)

**For further contact information visit:**

[www.thesplashlab.com](http://www.thesplashlab.com)





Meadow Industrial Estate, 34 Water Street,  
Stockport SK1 2BU  
T: 0161 482 7000  
[info.uk@thesplashlab.com/uk](mailto:info.uk@thesplashlab.com/uk)  
[thesplashlab.com](http://thesplashlab.com)